

the  
**TEXTILE**  
**EYE**

Report No. 29 - Summer 2026

INSIGHTS FOR INSPIRED DESIGNERS

**MATERIA  
MILANESE**

*Surface, Symbol & Material from Milan Design Week*

**ITALIAN INSPIRATION**

*Insights from Barnaba Fornasetti  
and Dedar's Raffaele Fabrizio*

**COLORI CONTRASTI**

*Color & Contrast from Milan*



Theme

# Fiori Sospesi *Suspended Florals*

Florals are no longer simply blooming across surfaces—they are suspended, fragmented, carved, pressed, and reassembled. This season's botanicals embrace relief, shadow, and dimensional weave effects, with matelassés, cut lines, and layered constructions creating a sculptural presence. There is a feeling of growth and spread throughout the category, with vines, leaves, and floral forms that reach, climb, and cover surfaces. Dried and pressed flowers emerge as an important direction, recalling the flower-child nostalgia of the 1970's: botanicals preserved beneath glass, suspended in resin, or rendered as collected specimens. Off-kilter repeats embrace imperfection, variation, and the chaos of nature, introducing subtle shifts within the repeat to keep the eye moving.

## LOOKS

Verdure-inspired tapestries & dense garden layouts

Amber-like resin & suspended botanical effects

Sculptural matelassés & carved botanical reliefs

Dried, pressed & preserved flower motifs

Palm leaves, vines & climbing forms

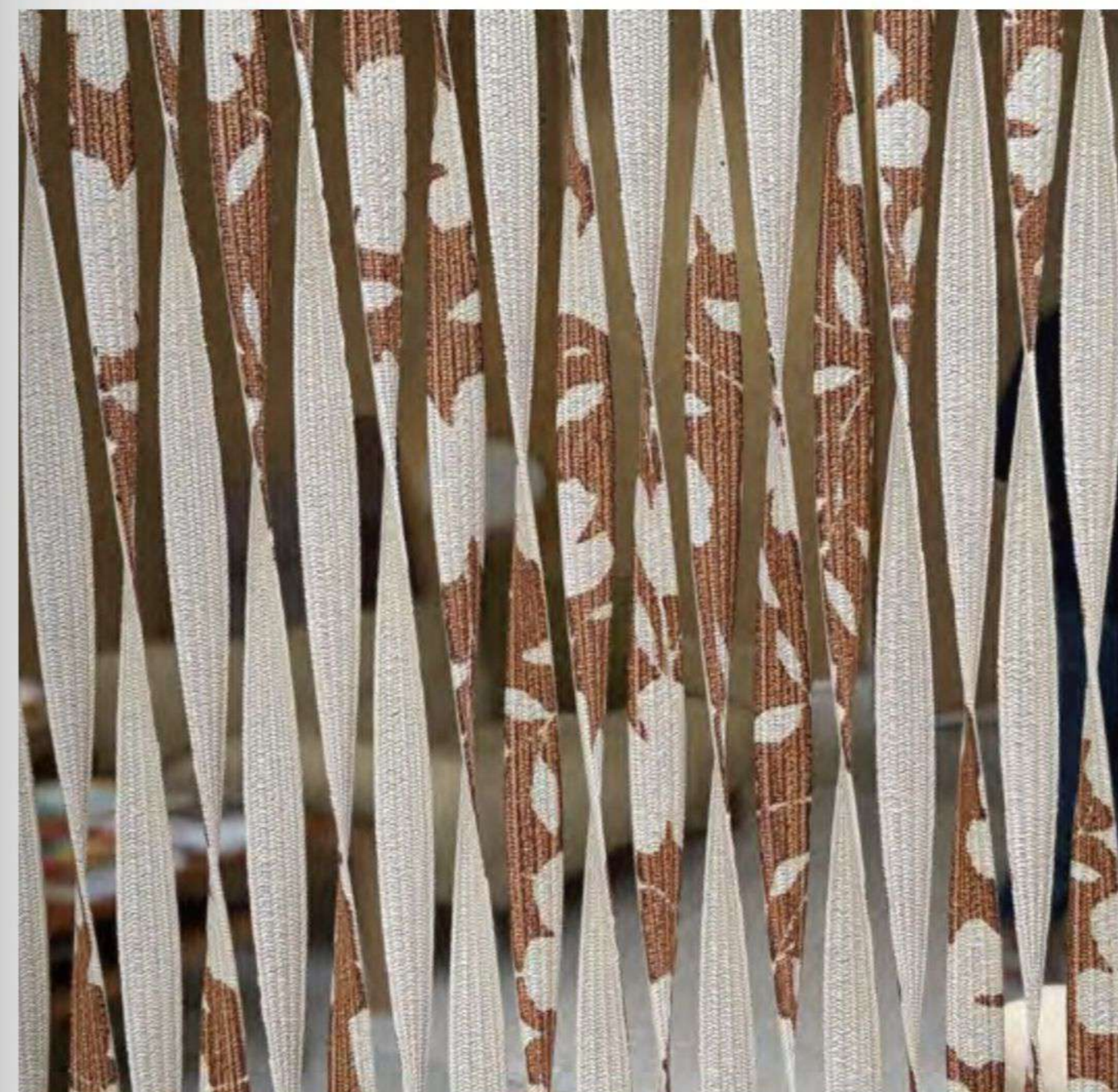
Dark-ground florals with layered depth

Reconstructed & tiled florals

Repeats with organic variation

Sun-print effects & soft edges

Wall&decò



Paola Lenti



Nilufar



Nilufar



Nilufar



Alberto Levi Gallery x Marta Bastianello Design Milano



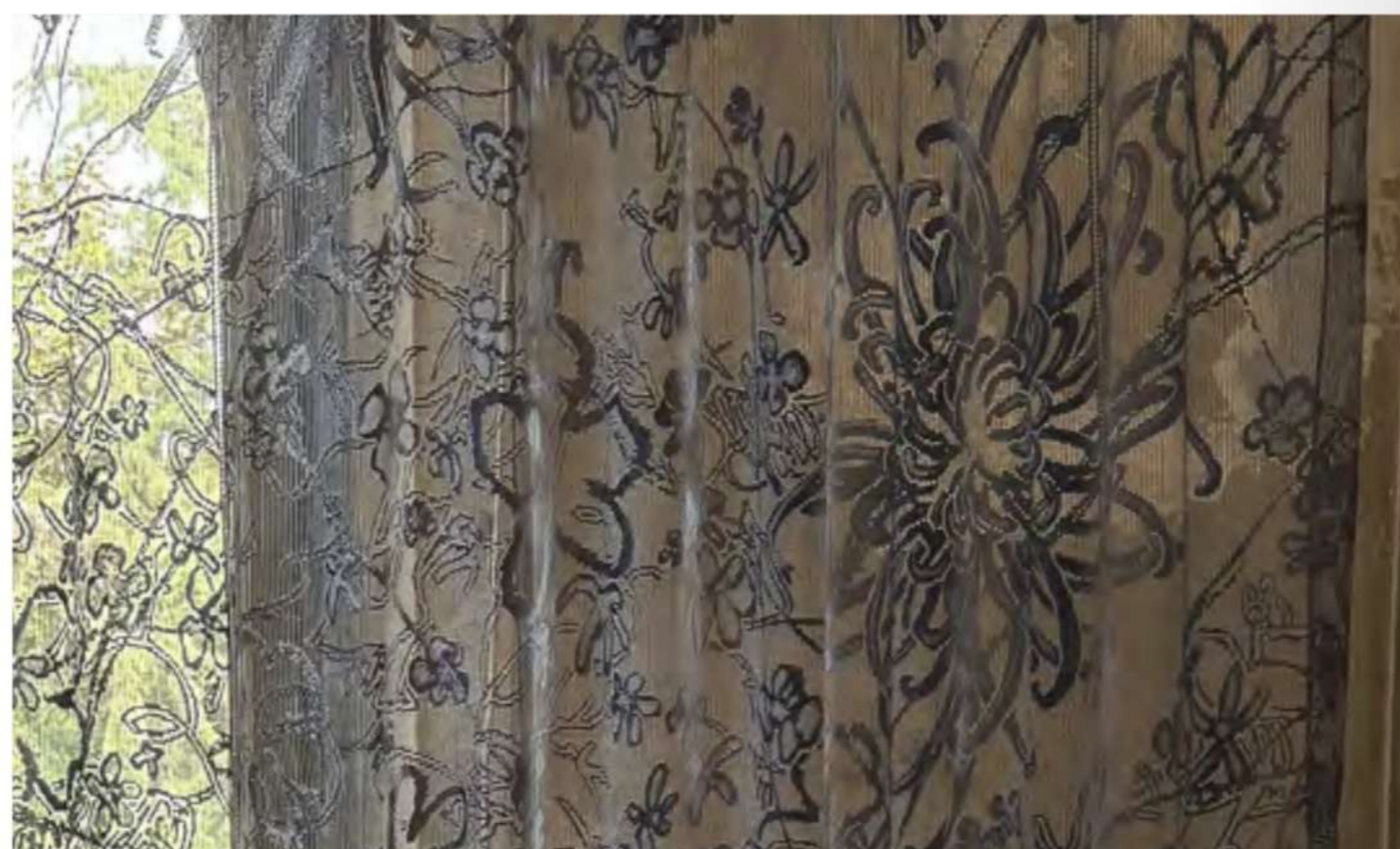
Kreoo



Limited Edition



Natalia Triantafylli x Andrew Pierce Scott at Alcova



Jane Wright x Jesse Butterfield at Alcova



Marcin Rusak Studio



Mastro Raphaël

# SHADES & PALETTES

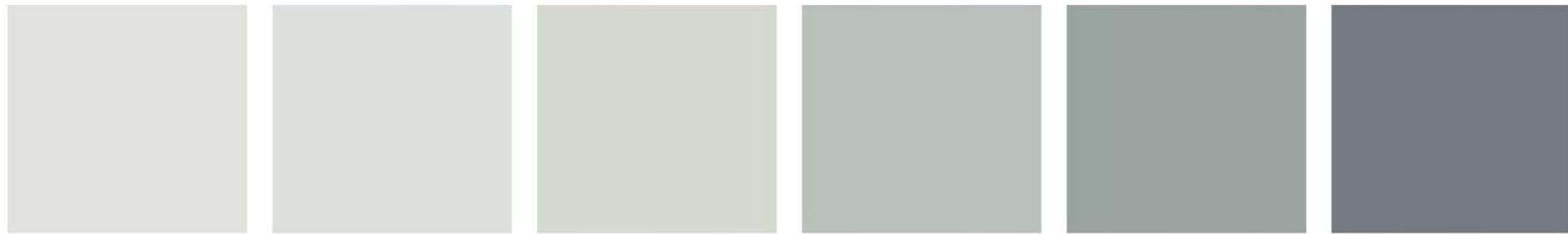


## Colori Contrasti

### Color & Contrast from Milan

Warmth dominates the conversation, and this season, the question is less whether designers embrace warmth and more how they interpret it. Across the Milan shows, orange fractures into dozens of directions: bronzed camel, copper terracotta, burnished amber, pink-tinged clay, cordovan, saffron, and near-fluorescent citrus tones. Rather than a single trend, warmth has become a broad territory for exploration.

Alongside these heated palettes, designers continue their search for new neutrals. Ivory remains important, but butter yellows, walnut browns, celadon tones, petrol teals, and softened metallics offer fresh alternatives to beige-heavy schemes. Black also emerges as a powerful counterpoint, appearing repeatedly as an all-over statement. Tertiary rainbows, heated reds, and jewel-like greens inject an artistic spirit into the mix, as designers push color further while maintaining a sense of sophistication and restraint.



HEX #E1E2DB

HEX #DCE0DC

HEX #D1D8CE

HEX #B5BEB8

HEX #94A09B

HEX #6C757D

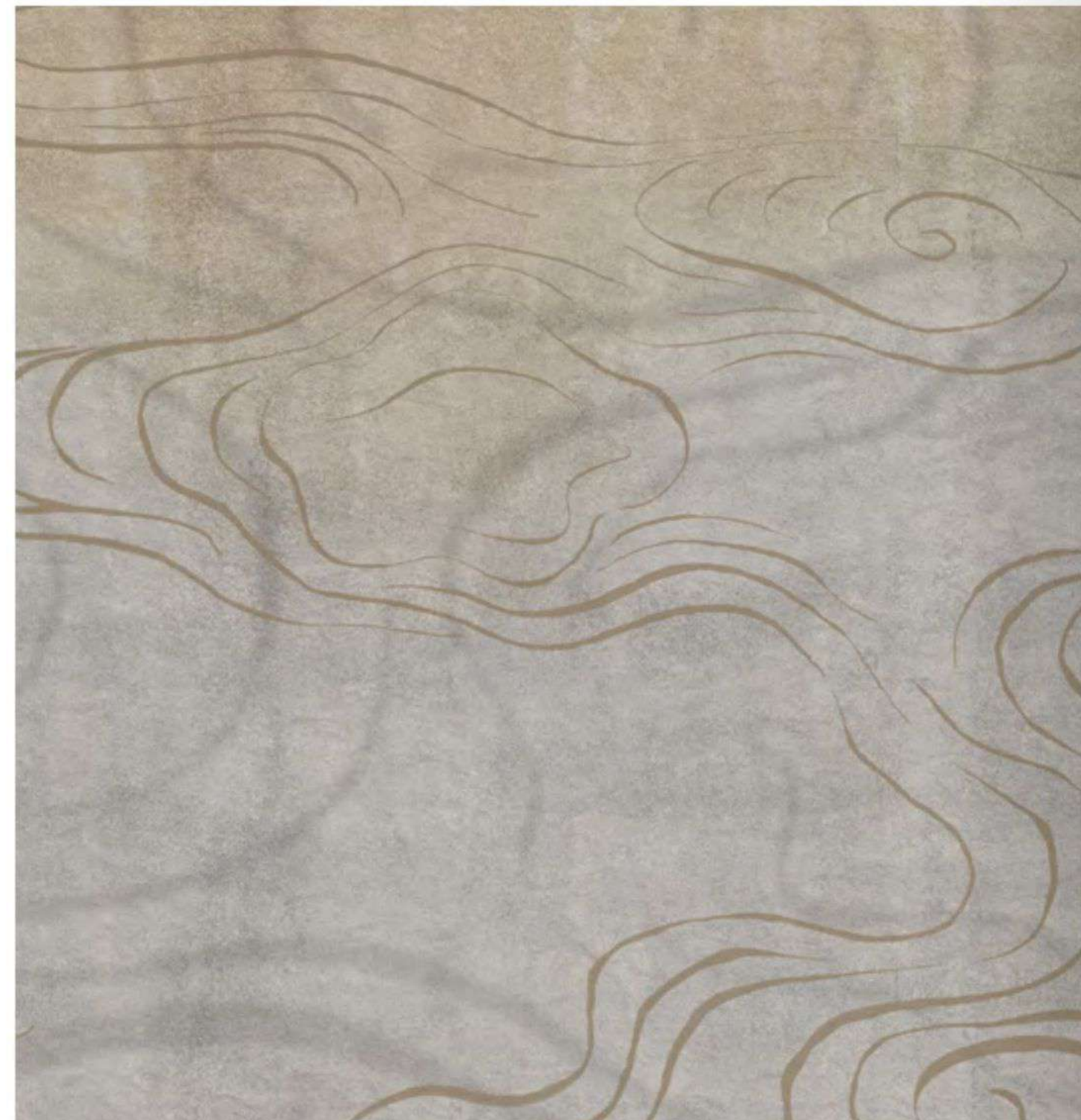
*Shades*

## Luna Celadon

- As designers continue to crave cooler neutrals, hazy blue-green tones are emerging as a softer alternative to gray.
- With the feeling of mother-of-pearl, these misty celadon shades bring an elegant, slightly mystical quality while remaining easy to live with.



Nilufar



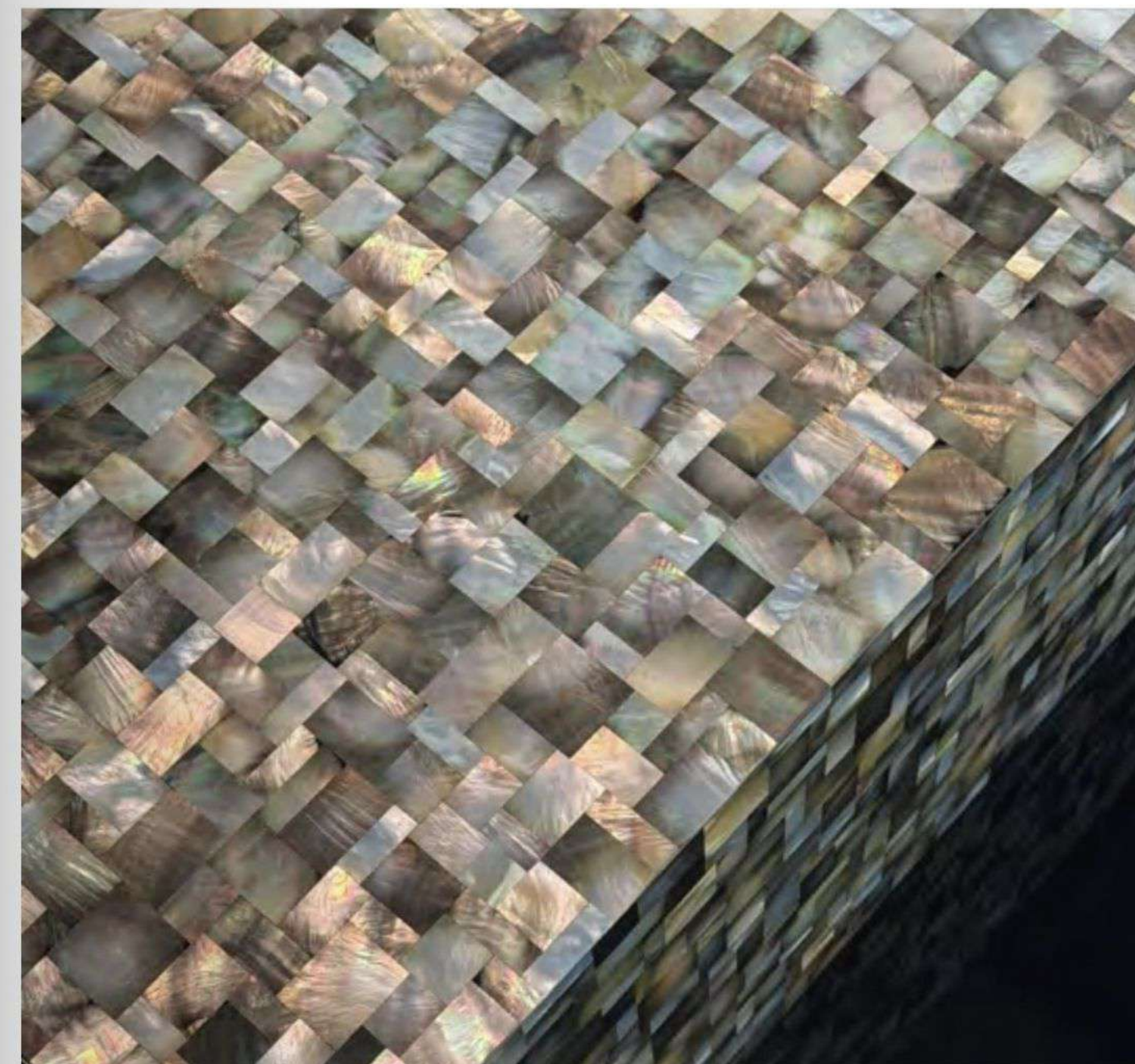
Wall/Pepper



Paola Lenti



Limited Edition



Armani/Casa



Wall&decò