

# XPO 10

(EX  
PRO)  
SYSTEM

An AirClad X Technical Data Sheet



Updated 07/04/22  
by SC

**XPO  
TECHNICAL DATA  
10m by 10m**

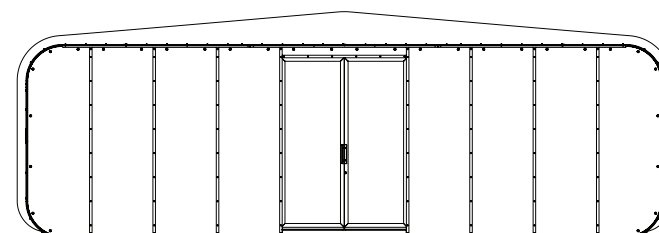
# XP O 10

(X)

## CONTENTS

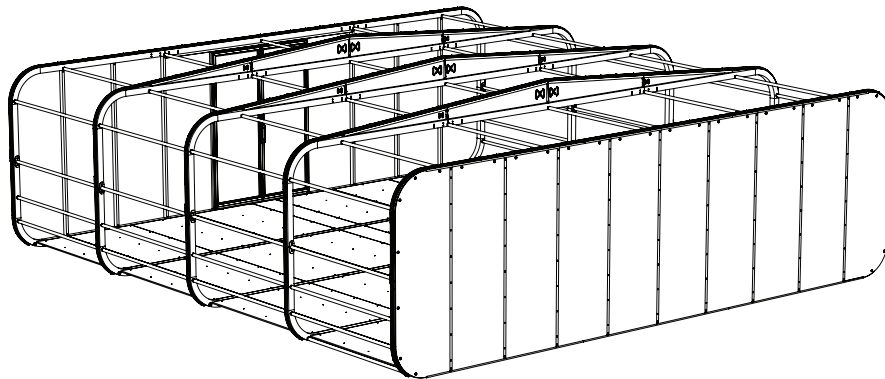
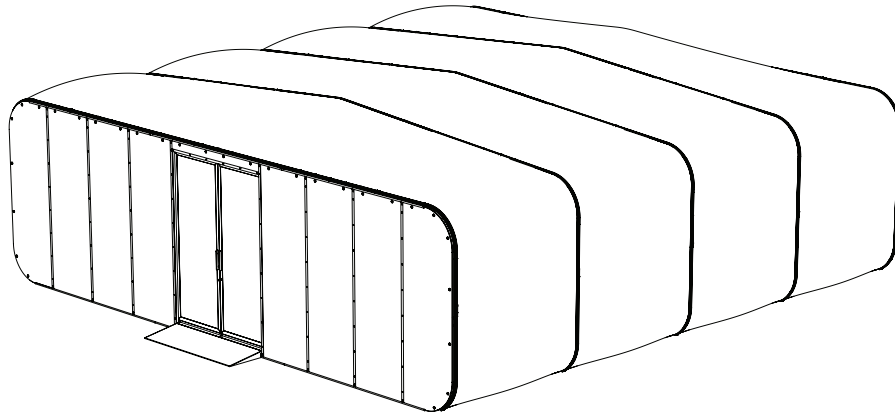
10m by 10m

|                  |    |
|------------------|----|
| INTRODUCTION     | 03 |
| CORE PACKAGE     | 04 |
| COMPARISON CHART | 05 |
| ELEVATIONS       | 06 |
| VISUALS          | 11 |



# XPO

## INTRODUCTION



This Technical Data document is designed to assist prospective clients and operators by offering a scope of the physical aspects of this AirClad X structure. The information provided is intended as a guide and should not be used to overlay detailed plans. 3D CAD files are available for project-specific applications on request.

Our flagship product, the AirClad XPO System is single-height, mobile architecture for the events world. It provides the ultimate platform to showcase your brand and inspires people to be a part of it.

3m high as standard and available in a range of widths from 6m as standard, the XPO is modular in depth, extending away from the fascia in 2.5m increments.

Designed for maximum efficiency in production, with design details that negate the need for nuts and bolts, the XPO is easy to assemble and efficient to transport. The core XPO package includes all parts required to assemble a sealed, secure space, ready for interior fit out.

Quality finishes create a premium feel, inside and out. The Space Frames and Cross Braces are double powder coated for durability in a choice of RAL colours. The Fascia uprights, as with the door frames, are finished in a premium, textured black powder coat.

The integrated raised flooring features 150mm floor cavities to run electrics and AV cabling to preserve the clean aesthetic of the internal space. 18mm plywood floor has a tough resin-coat and comes ready for a range of internal floor finishes to make the space your own. A 5KPA loading ensures the XPO is ready for anything.

The front fascia on the XPO incorporates a double sliding door system and is supplied with a clip-on 1m deep ramp for easy access. The rear fascia is fully closed as standard with doors available as an option.

The XPO is proudly designed and produced in the EU and is engineered to Euro Code 13782.

### NOTE

For the purposes of the data sheets, the information provided is based on single double sliding doors to the front with a closed fascia to the rear. For information on operations and health and safety please refer to product logbook.

# XPO 10 x 10

## CORE PACKAGE

|   |  |
|---|--|
| <b>Structural Frames:</b>                           | 5  |
| <b>Cross bracing:</b>                               | 36   |
| <b>Flooring:</b>                                    | 4 centre boards<br>24 whole boards<br>6 end boards |
| <b>Double sliding door system with ramp access:</b> | 1  |
| <b>Glazing:</b>                                     | 14 square sheets<br>4 rounded edge sheets          |
| <b>AirCells:</b>                                    | 4  |
| <b>Air management systems:</b>                      | 1  |
| <b>Connection Hoses:</b>                            | 4  |
| <b>OPTIONAL EXTRAS</b>                              |  |
| <b>Number of Stillages:</b>                         | 1  |
| <b>Weight of Stillage:</b>                          | 590 kg   |

### PACKED STRUCTURE DETAILS

|                         |                        |
|-------------------------|------------------------|
| <b>Max Packed Size:</b> | 10.15m x 1.17m x 2.47m |
| <b>Packed weight:</b>   | 4811 kg                |

### BUILT STRUCTURE DETAILS

|   |  |
|---|--|
| <b>Max External footprint:</b>          | 10.3 m by 10.1 m (104 m <sup>2</sup> ) |
| <b>Internal usable area:</b>            | 9.6 m by 9.9 m (95 m <sup>2</sup> )    |
| <b>Max height:</b>                      | 3.55 m                                 |
| <b>Max entrance / exit opening:</b>     | 1.8 m by 2.5m high                     |
| <b>Frame Cross section:</b>             | 100 mm by 100 mm                       |
| <b>Cross bracing cross section:</b>     | 50mm Diameter                          |
| <b>Structure total weight:</b>          | 4207 kg                                |
| <b>Lorry Side Curtain Size (Artic):</b> | 13.30m x 2.50m x 2.60m                 |

### MATERIALS

|                         |                                      |
|-------------------------|--------------------------------------|
| <b>Aircells:</b>        | FR treated polyester re enforced PVC |
| <b>Frame:</b>           | Powder coated extruded Aluminium     |
| <b>Cross bracing:</b>   | Powder coated mild steel             |
| <b>Flooring:</b>        | 18mm thick resin coated ply wood     |
| <b>Flooring braces:</b> | 50mm galvanized box section steel    |
| <b>Glazing:</b>         | 6mm Polycarbonate                    |

### POWER

**Air Management system:** draws 1.4amp

### INSTALLATION AND DERIG GUIDE

|                        |   |
|------------------------|---|
| <b>Crew:</b>           | min 6 people  |
| <b>Crew Leader:</b>    | 1 person  |
| <b>Set up time:</b>    | from 3 hours  |
| <b>Derig time:</b>     | from 3 hours  |
| <b>Tools required:</b> | General site tools plus 2x step ladders and 1x4m easy move scaffold tower |

#### NOTE

The above refers to setting up the structures, fixing and pressurising of air cells only. The guides supplied represent minimum required action to achieve a safe and secure installation. The times indicated may vary due to site conditions, access, weather and other elements outside of our control. We always advise pre-installation site visits where possible in advance of any goods arriving on site. AirClad accepts no responsibility for damages to equipment, structures, injuries to persons, or loss of earnings due to structure installation methods outside of their own crew control.





## XPO 10 x 10

## COMPARISON CHART

| XPO 10          |                            | 2.5      | 5  | 7.5 | 10 | 12.5 | 15 | 17.5 | 20 | 22.5 | 25 |
|-----------------|----------------------------|----------|----|-----|----|------|----|------|----|------|----|
| SYSTEM          | COMPONENTS                 | QUANTITY |    |     |    |      |    |      |    |      |    |
| Main Frame      | Upper Outer Frame          | 2        | 2  | 2   | 2  | 2    | 2  | 2    | 2  | 2    | 2  |
|                 | Lower Outer Frame          | 2        | 2  | 2   | 2  | 2    | 2  | 2    | 2  | 2    | 2  |
|                 | Upper Inner Frame          | 0        | 1  | 2   | 3  | 4    | 5  | 6    | 7  | 8    | 9  |
|                 | Lower Inner Frame          | 0        | 1  | 2   | 3  | 4    | 5  | 6    | 7  | 8    | 9  |
| Cross Brace     | Single Cross Brace         | 7        | 14 | 21  | 28 | 35   | 42 | 49   | 56 | 63   | 70 |
|                 | Double Cross Brace         | 2        | 4  | 6   | 8  | 10   | 12 | 14   | 16 | 18   | 20 |
| Flooring        | Middle Floor Board         | 1        | 2  | 3   | 4  | 5    | 6  | 7    | 8  | 9    | 10 |
|                 | Standard Floor Board       | 6        | 12 | 18  | 24 | 30   | 36 | 42   | 48 | 54   | 60 |
|                 | Edge Floor Board           | 2        | 4  | 6   | 8  | 10   | 12 | 14   | 16 | 18   | 20 |
|                 | Access Ramp (2m)           | 1        | 1  | 1   | 1  | 1    | 1  | 1    | 1  | 1    | 1  |
| Fascia Glazing  | Fascia Panel Straight      | 14       | 14 | 14  | 14 | 14   | 14 | 14   | 14 | 14   | 14 |
|                 | Fascia Panel Rounded       | 4        | 4  | 4   | 4  | 4    | 4  | 4    | 4  | 4    | 4  |
|                 | Fascia Panel Above Door    | 1        | 1  | 1   | 1  | 1    | 1  | 1    | 1  | 1    | 1  |
|                 | Fascia Washer              | 60       | 60 | 60  | 60 | 60   | 60 | 60   | 60 | 60   | 60 |
| Fascia Uprights | Fascia Upright             | 15       | 15 | 15  | 15 | 15   | 15 | 15   | 15 | 15   | 15 |
|                 | Fascia Upright Cover Strip | 15       | 15 | 15  | 15 | 15   | 15 | 15   | 15 | 15   | 15 |
|                 | S-Door Upright             | 2        | 2  | 2   | 2  | 2    | 2  | 2    | 2  | 2    | 2  |
|                 | S-Door Cover Strip         | 2        | 2  | 2   | 2  | 2    | 2  | 2    | 2  | 2    | 2  |

This chart is to give an overview of the differences from one system size to the next. It is intended to assist in cases where sites, access, set up times may affect what is possible with a project.



| XPO 10                         |                                | 2.5      | 5    | 7.5  | 10   | 12.5 | 15   | 17.5 | 20   | 22.5 | 25   |
|--------------------------------|--------------------------------|----------|------|------|------|------|------|------|------|------|------|
| SYSTEM                         | COMPONENTS                     | QUANTITY |      |      |      |      |      |      |      |      |      |
| Sliding Door Set               | Sliding Door Left (With Poly)  | 1        | 1    | 1    | 1    | 1    | 1    | 1    | 1    | 1    | 1    |
|                                | Sliding Door Right (With Poly) | 1        | 1    | 1    | 1    | 1    | 1    | 1    | 1    | 1    | 1    |
|                                | Sliding Door Rail              | 1        | 1    | 1    | 1    | 1    | 1    | 1    | 1    | 1    | 1    |
|                                | Sliding Door Guide             | 1        | 1    | 1    | 1    | 1    | 1    | 1    | 1    | 1    | 1    |
| Aircells                       | Full Aircell                   | 1        | 2    | 3    | 4    | 5    | 6    | 7    | 8    | 9    | 10   |
| Air Management                 | Fan                            | 1        | 1    | 1    | 1    | 1    | 1    | 1    | 1    | 1    | 1    |
|                                | Hose Set                       | 1        | 2    | 3    | 4    | 5    | 6    | 7    | 8    | 9    | 10   |
|                                | Jubilee Clips                  | 3        | 6    | 9    | 12   | 15   | 18   | 21   | 24   | 27   | 30   |
|                                | Valve Caps                     | 4        | 8    | 12   | 16   | 20   | 24   | 28   | 32   | 36   | 40   |
| Packaging<br>(Optional Extras) | Valve Connectors               | 1        | 2    | 3    | 4    | 5    | 6    | 7    | 8    | 9    | 10   |
|                                | Stillage                       | 1        | 1    | 1    | 1    | 1    | 1*   | 2    | 2    | 2    | 2    |
|                                | Stillage Cover                 | 1        | 1    | 1    | 1    | 1    | 2    | 2    | 2    | 2    | 2    |
|                                | Aircell Bag                    | 1        | 2    | 3    | 4    | 5    | 6    | 7    | 8    | 9    | 10   |
| STRUCTURE WEIGHT (KG)          |                                | 1663     | 2511 | 3359 | 4207 | 5055 | 5903 | 6751 | 7599 | 8447 | 9295 |

\*Frame Extension

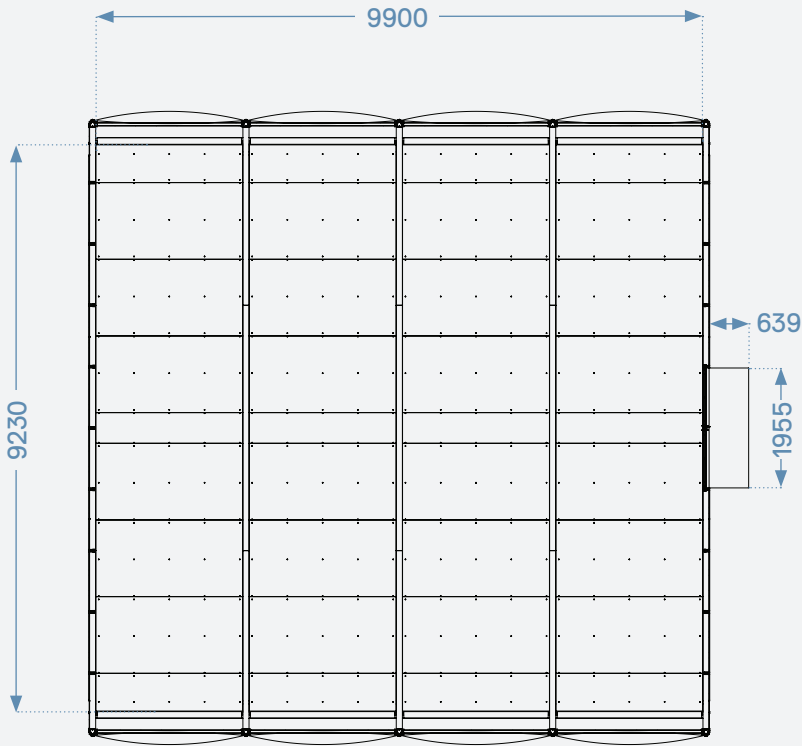
## Disclaimer

Please note the information in the document is offered as guidance only. AirClad and its partners accept no liability for variations in dimensions, weights, and written information provided. AirClad and its partners reserve the right to alter or delete any information provided at any time.

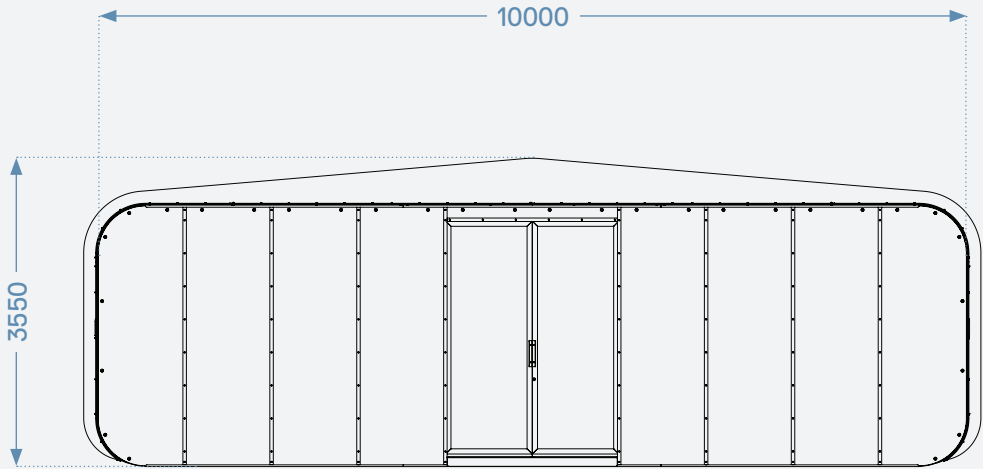
XPO 10 x 10

ELEVATIONS

All sizes in mm.



PLAN



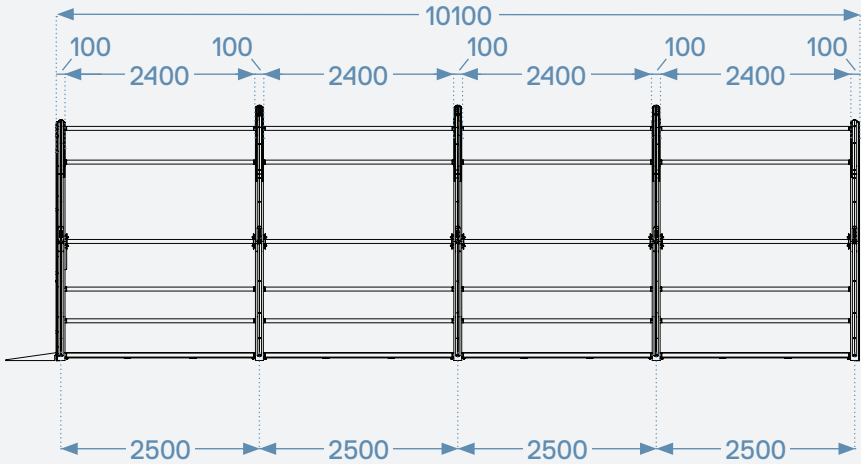
FRONT ELEVATION



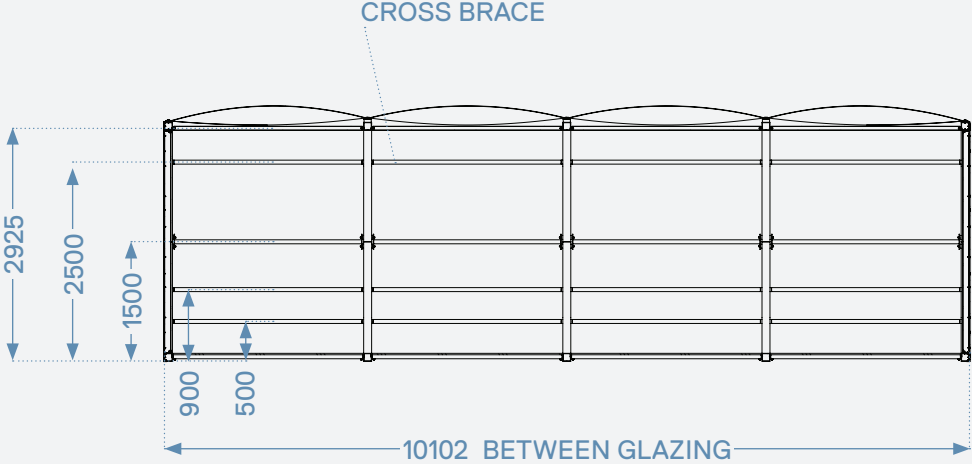
XPO 10 x 10

ELEVATIONS

All sizes in mm.



SIDE ELEVATION & SECTION



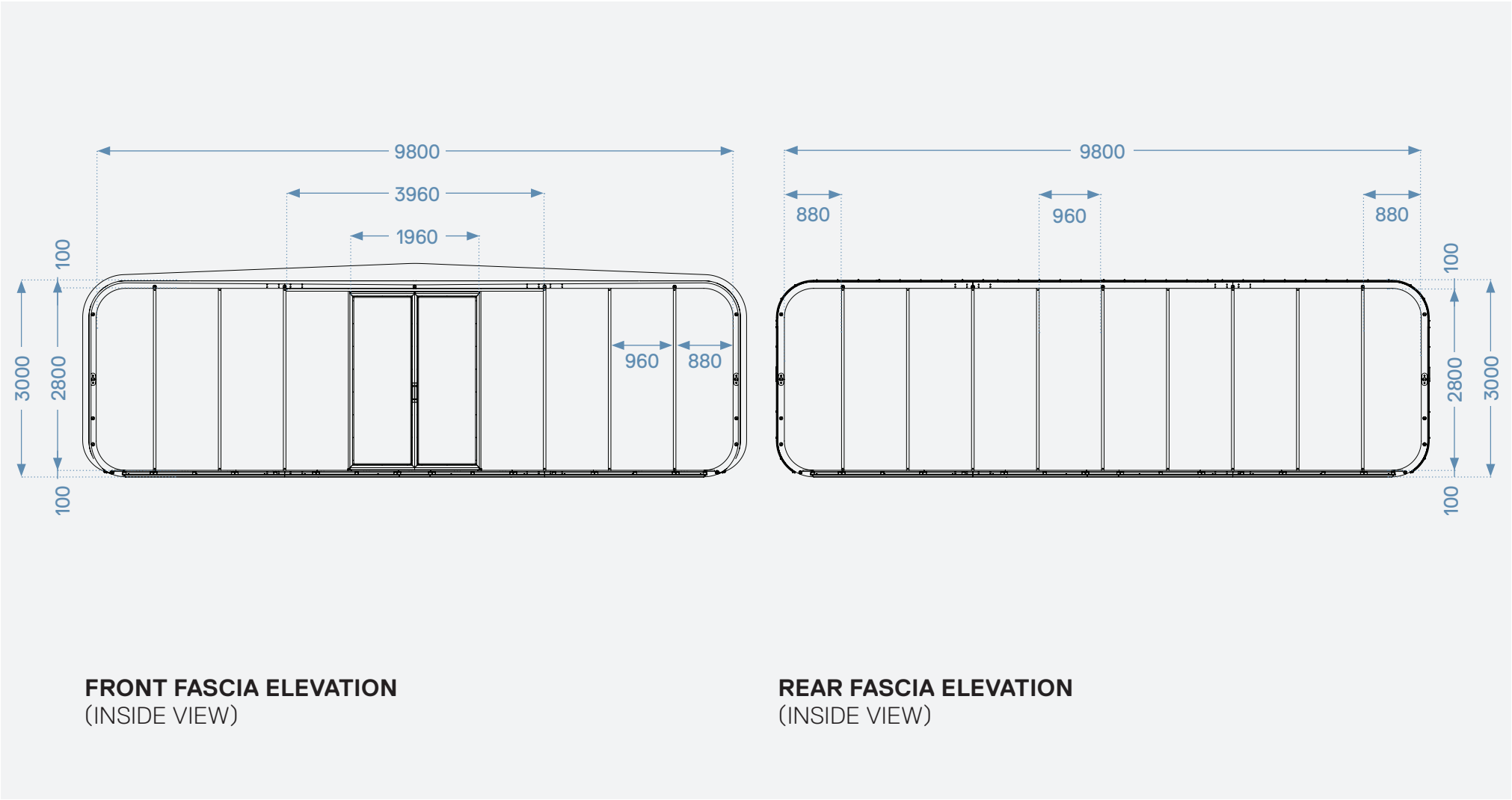
SECTION



XPO 10 x 10

ELEVATIONS

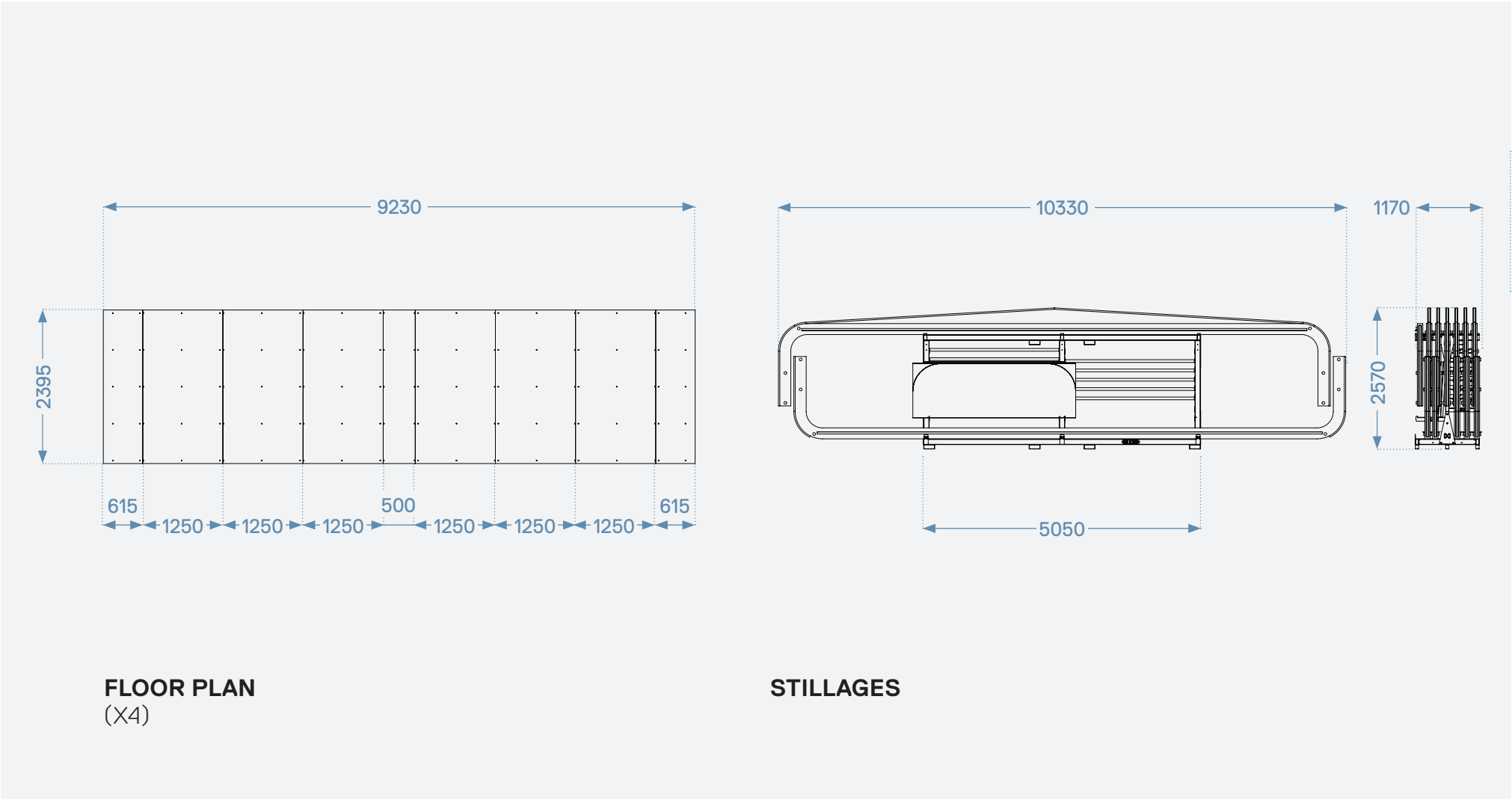
All sizes in mm.



XPO 10 x 10

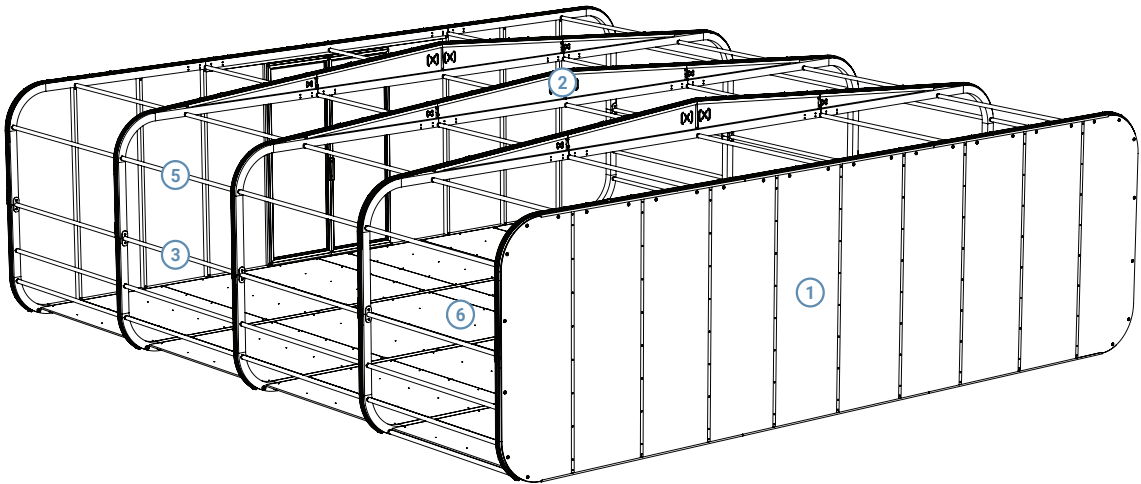
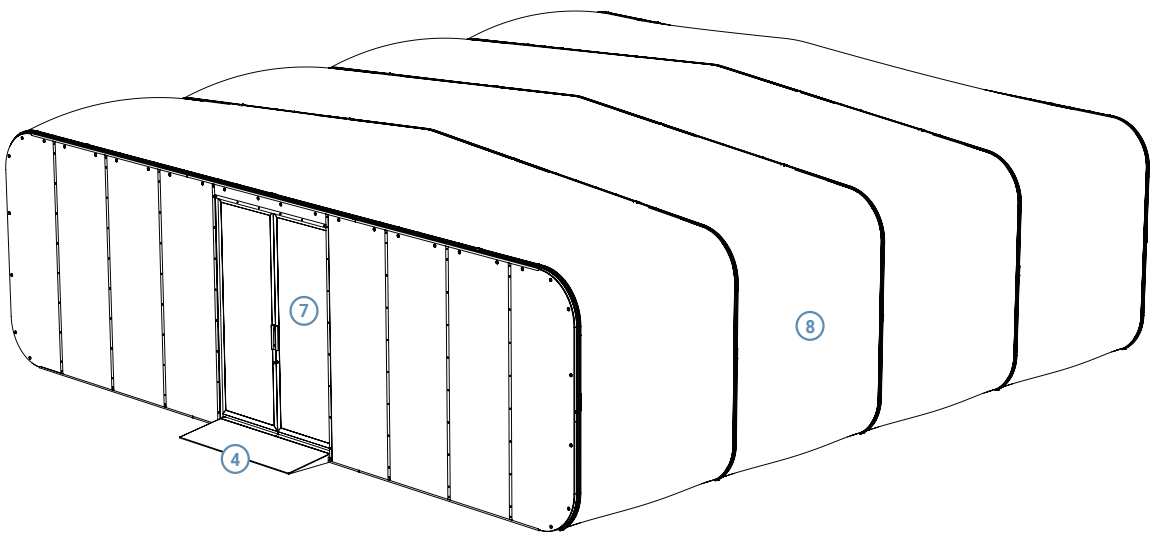
ELEVATIONS

All sizes in mm.



XPO 10 x 10

ELEVATIONS



| Item No. | Description        | QTY. |
|----------|--------------------|------|
| ①        | Closed Fascia      | 1    |
| ②        | Mid Fascia         | 3    |
| ③        | Cross Brace Double | 8    |
| ④        | Ramp H100 L1955    | 1    |
| ⑤        | Cross Brace Single | 46   |
| ⑥        | Floor XPO 10       | 4    |
| ⑦        | Door Fascia        | 1    |
| ⑧        | AirCell XPO 10     | 4    |





# XPO 10 x 10

## VISUALS







**SPACE FOR LIFE**

**AirClad Ltd  
57 Canbury Park Road  
Kingston  
London  
KT2 6LQ**

**[info@airclad.com](mailto:info@airclad.com)  
[www.airclad.com](http://www.airclad.com)**

**#FASTARCHITECTURE**