

(EX  
PRO)  
SYSTEM



AIRCLAD (X)

XPO COLLECTION



# Redefining the future of events

AirClad X is our brand of event, retail and leisure products with high performance design at its core.

Established in 2007, over the years AirClad X has worked extensively with premium brands and clients to produce one-off, custom designs. As a result of this experience, we have developed our own range of industry-leading products to suit a multitude of applications.

These structures are crafted to engage and inspire people, and to ultimately bring your space to life.

To assist in the installation and delivery of our structures globally, there is a developing network of partners managing deployments from location to location.



Structure: XPO 10  
Location: London  
Client: Sony



Structure: XPO 10  
Location: Goodwood FOS  
Client: Lotus



# Event Architecture

02

04

06

13

16

42

45

46



Structure: XPO 6  
Location: Manchester  
Client: Apple



## WHY THE EXPRO SYSTEM

# What does it do for you?

**The EXPRO system can be creatively configured to develop a huge range of fully branded event spaces.**

With extensive options for customisation, the AirClad XPO can reflect any brand guides to suit a multitude of marketing applications.

The frames offer the flexibility to be colour coded to match a brand's colour scheme, or for more temporary events can be vinyl wrapped to create a new look.

Using black AirCells is a great way to step away from the connotations of traditional frame marquees and our standard-issue fascia can be recessed to create a dynamic entrance or terrace.

The system is light for its size and easy to manoeuvre by hand, making this an ideal structure to use in locations with challenging operating conditions. With no heavy lifting equipment required, the XPO6 will pop up with minimal interference to the surrounding environment - wherever you choose to use it.

WHY?





**Build.  
Show.  
Repeat.**

WHY?



## ABOUT THE EXPRO SYSTEM

# What is XPO?

The XPO is our most popular product offering single height, premium event space. The system is comprised of a structural space frame and floor, wrapped in our pattern-cut AirCells to create uniquely strong monocoque structures.

As the XPO evolved, we designed solutions to negate the need for nuts and bolts, speeding up build times and creating clean, modern, contemporary spaces to build your event with.

We believe the XPO fills a gap in the market for high-end, quality, temporary structures with an architectural look and feel, far removed from any traditional marquee.

The XPO is our most popular commercial exposition system, designed for branded events and retail, delivering scale and modularity anywhere your event needs to be.



Structure: XPO 10  
Location: European Tour  
Client: BMW

WHAT?





## ENGAGING

The unique design of the XPO naturally attracts attention. Its bold, minimalist form - a result of its functional engineering - commands any space it occupies.

## INSPIRING

XPO challenges convention. The design motivates and delivers excitement through a unique ability to adapt its look and take on any personality.



## PREMIUM

Precision and quality are the driving forces behind our passion for innovation as we continue to explore what's possible. Our desire to deliver premium products is at the heart of everything we do.





## KNOW NO BOUNDARIES

The XPO is designed and engineered to be deployed in almost any location, on a wide range of ground types.

## INVESTMENT OPPORTUNITIES

We have flexible solutions to meet your requirements. We offer packages from seasonal rentals to longer term leasing that allow you to experience AirClad products prior to purchase.



## HIGH PERFORMANCE

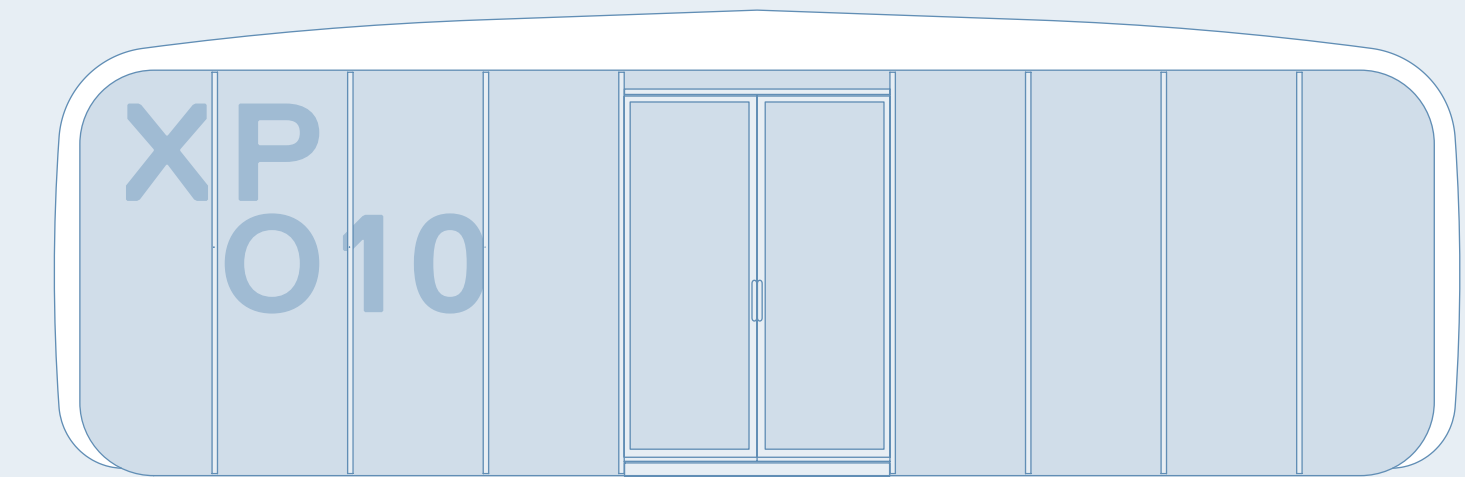
No matter the duration of your event, the XPO is designed for both temporary and permanent. Engineered to perform in a range of environments.

WHAT?

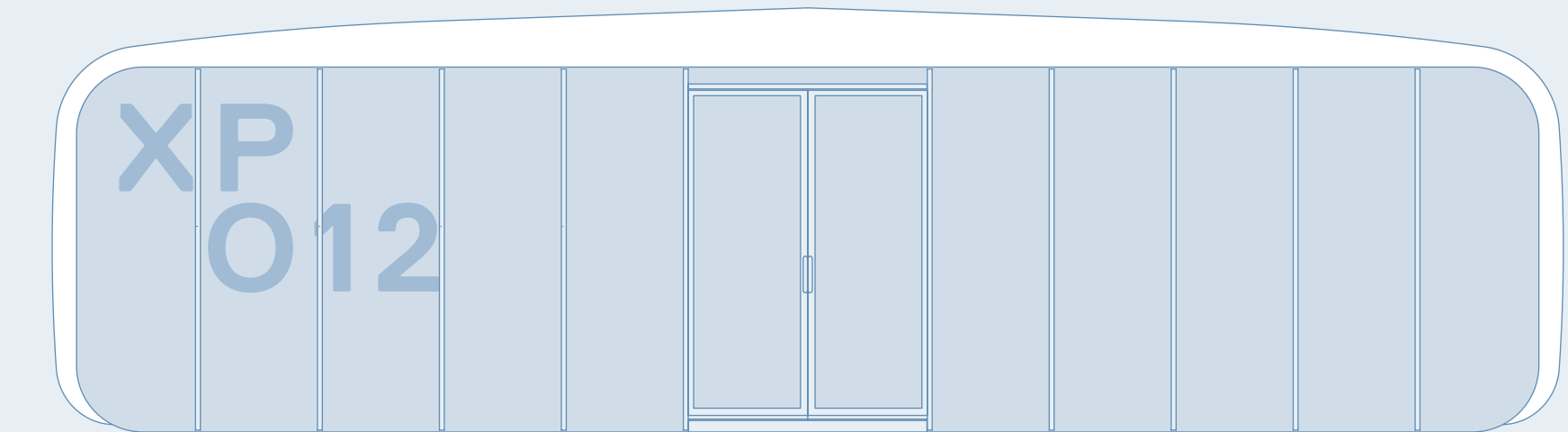
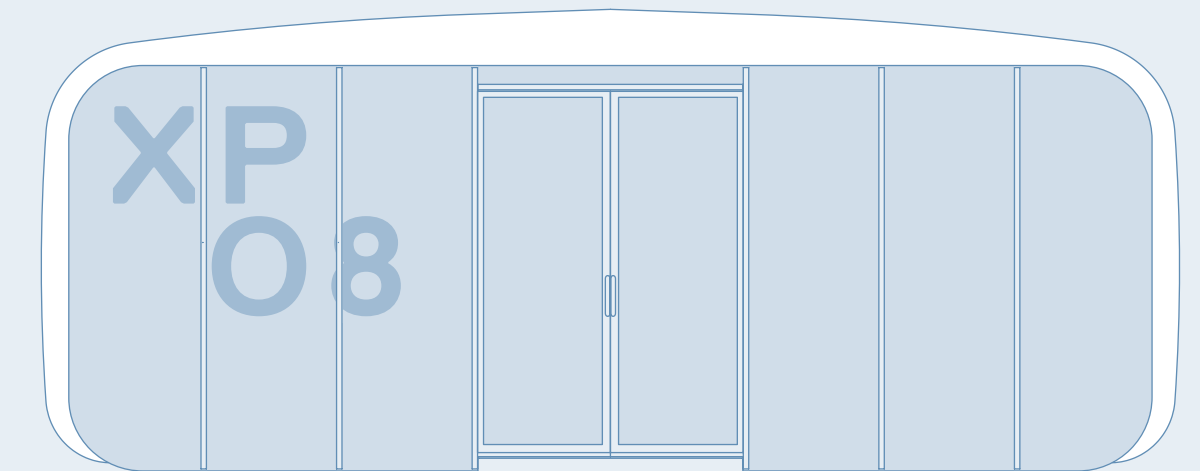
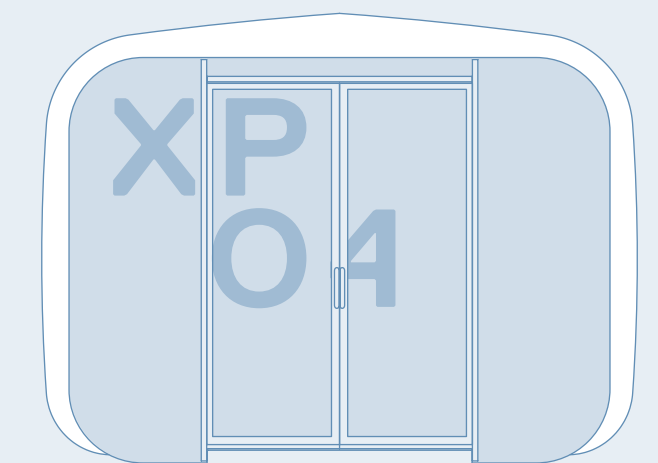


# How much space do you need?

CORE



CUSTOM



WHAT?

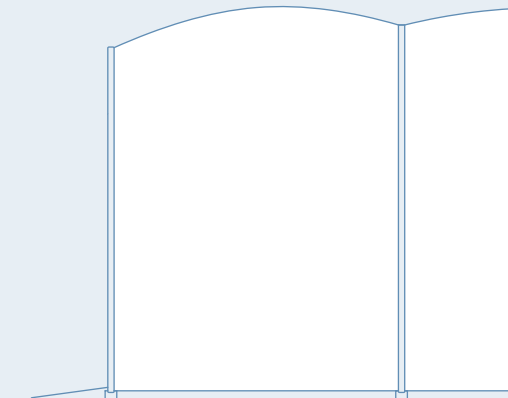
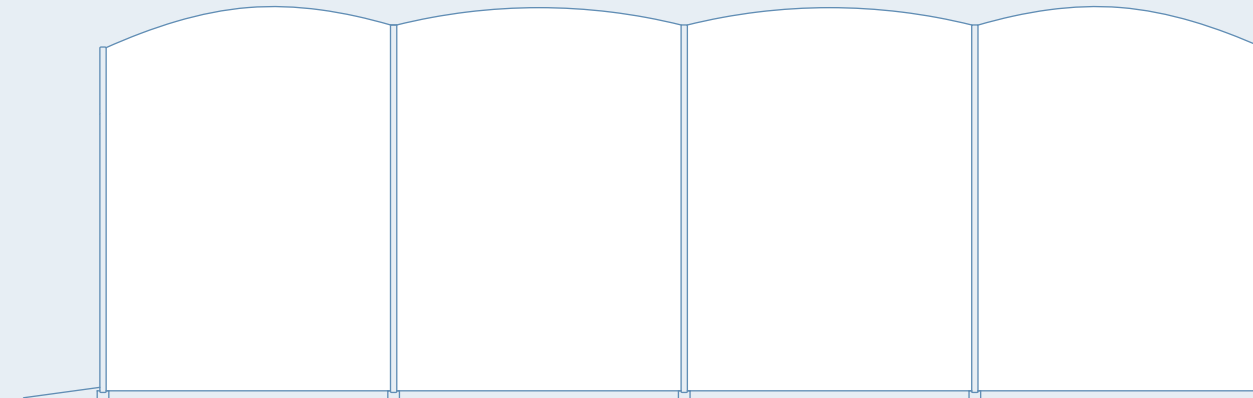
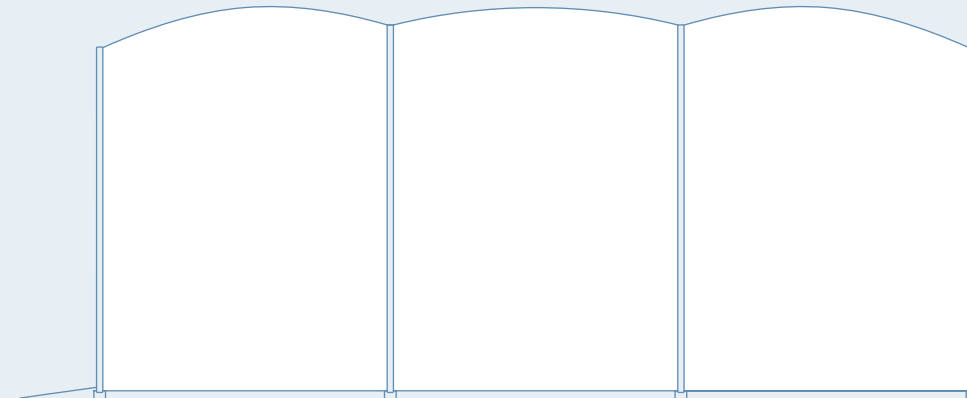
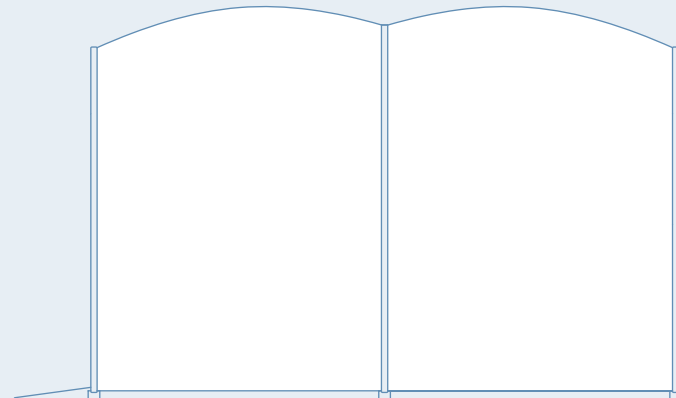
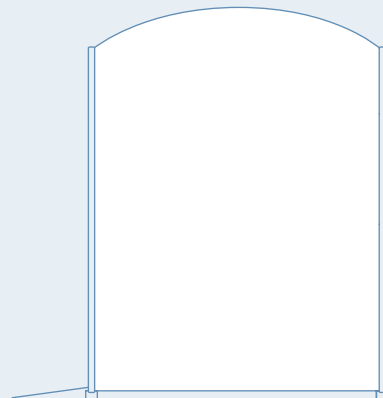


# Truly modular event architecture

(x)



# Extend your structure by 2.5m with additional bays





# BROADEN YOUR EVENT HORIZON



## OUR USP

# Unique Features

**AirClad X is a modular, mobile event system for global brands to get closer to their customers. Designed and engineered to grow as big as your brands ambition.**

The EXPRO system consists of an aluminium structural frame wrapped in pneumatic AirCells that 'clad' the building and create its unique engineering properties. The AirCells inflate to create structural tension forming a unique, rigid, yet light-weight structure which rarely requires ballast.

EXPRO has edited out all unnecessary nuts and bolts, in favour of a click and play system, speeding-up build times and offering a clean modern contemporary space to build your event from. With raised flooring and flush mounted glazed fascias, the structures are designed to feel architectural from the ground up.

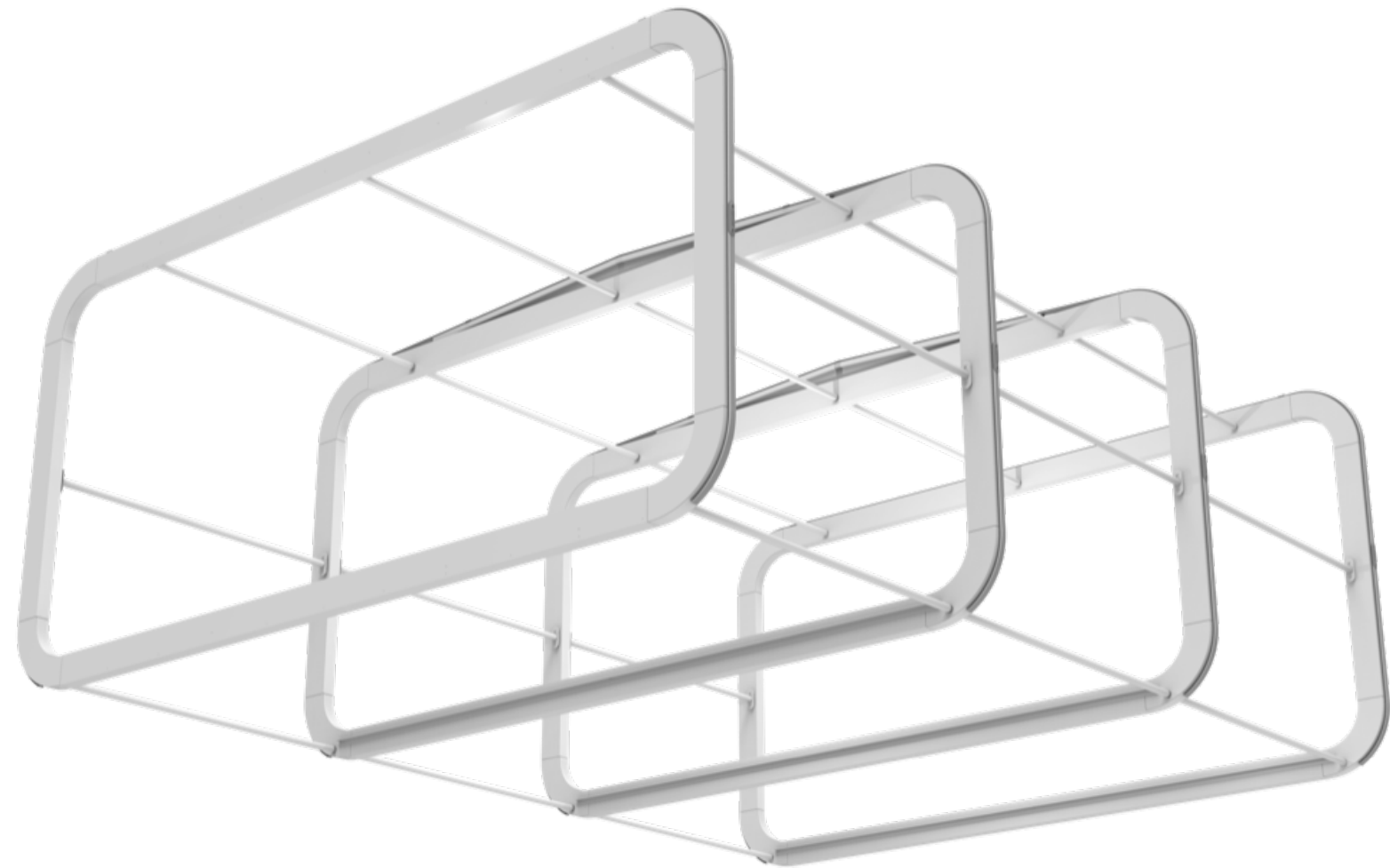
This system has been developed to fill a gap in the market, identifying a need for premium, quality, temporary structures.

Structure: XPO 4  
Location: London  
Client: On Running



FEATURES





## SPACE FRAME

Completely unique to the AirClad EXPRO system is the Space Frame's design and engineering. Comprised of a two-part aluminium section with internally-reinforced corners, the Space Frame is lightweight with superior structural qualities.

Customisable in a range of RAL colour coatings, overlay changes can be made to enhance your brand. The Space Frames click and slide together, providing fast and secure foundations for all EXPRO System Products.

## PUCKS

The Space Frames securely connect together using AirClad X Cross Braces which slide into our crafted Pucks which are mounted on the Space Frames.

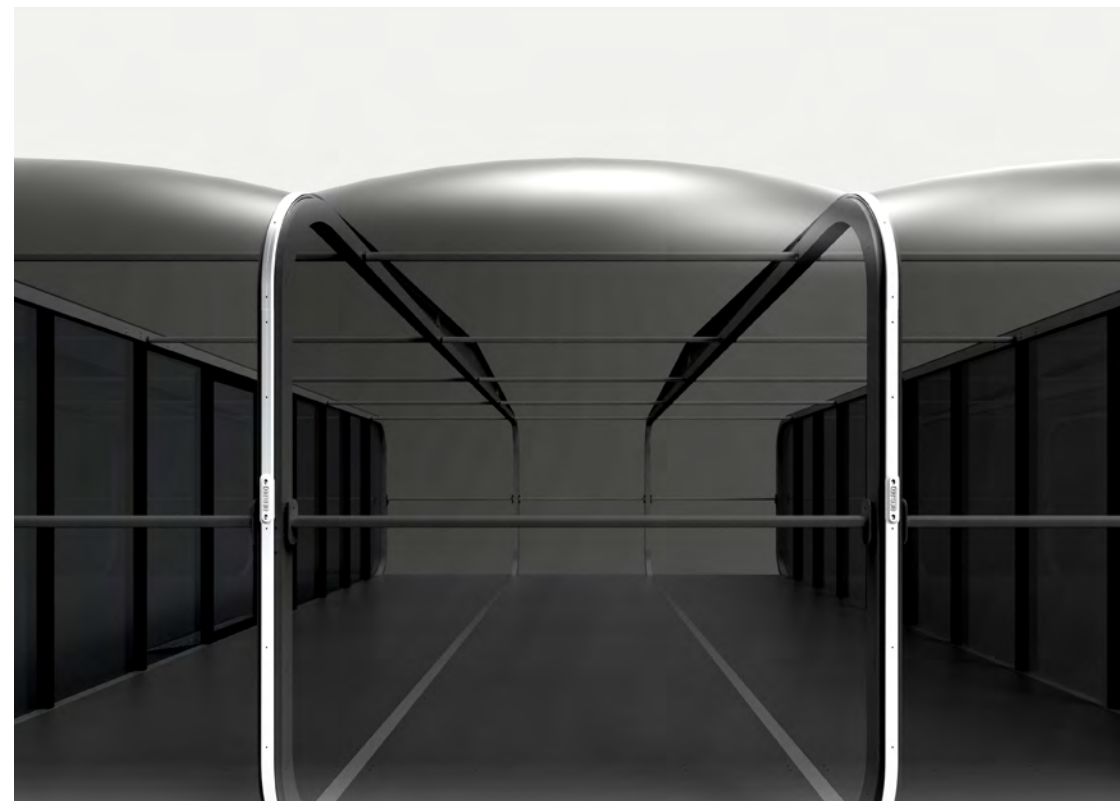
Designed to transfer forces when the AirCells are pressurised, the Cross Braces can be used to support various accessories, including lighting, branding and AV equipment.



## AIRCELLS

Pressurised air cladding is a core element of the AirClad EXPRO system. AirCells wrap around the Space Frames, locking into Keder extrusions. Once pressurised, the cladding creates a Monocoque structure.

The AirCells hug the shape of each frame and are typically made from polyester-reinforced PVC or glass-reinforced Silicon. Other substrates can be used in the system subject to performance requirements.





# Nothing holds us down

Wave goodbye to ballast & tethering lines

Structure: XPO 10  
Location: London Fields, UK  
Client: Hotpod Yoga

FEATURES



Structure: XPO 6  
Location: La Défense, Paris  
Client: Audi

Enhancements:  
Seamless rear fascia  
branding



MAKING IT YOURS

# The Personal Touch

At the heart of AirClad products is the capacity for full customisation. From signage and lighting, to full retail shoplift.

Bring your brand to Life.

As a design company at our core, we are able to respond to any brief and address any problem you need to solve. Our extensive experience of design, production and operations allows us to help you find an appropriate solution, be it with or without an AirClad.

All of our structures are designed to be permanently and temporary branded and our in house team can assist with templates and full art working as required.

MAKING IT YOURS





# IT'S A WRAP

GRAPHIC ENHANCEMENTS

## AirCells

**Our AirCells can be fully branded in production to deliver striking results. The only limit is your imagination.**

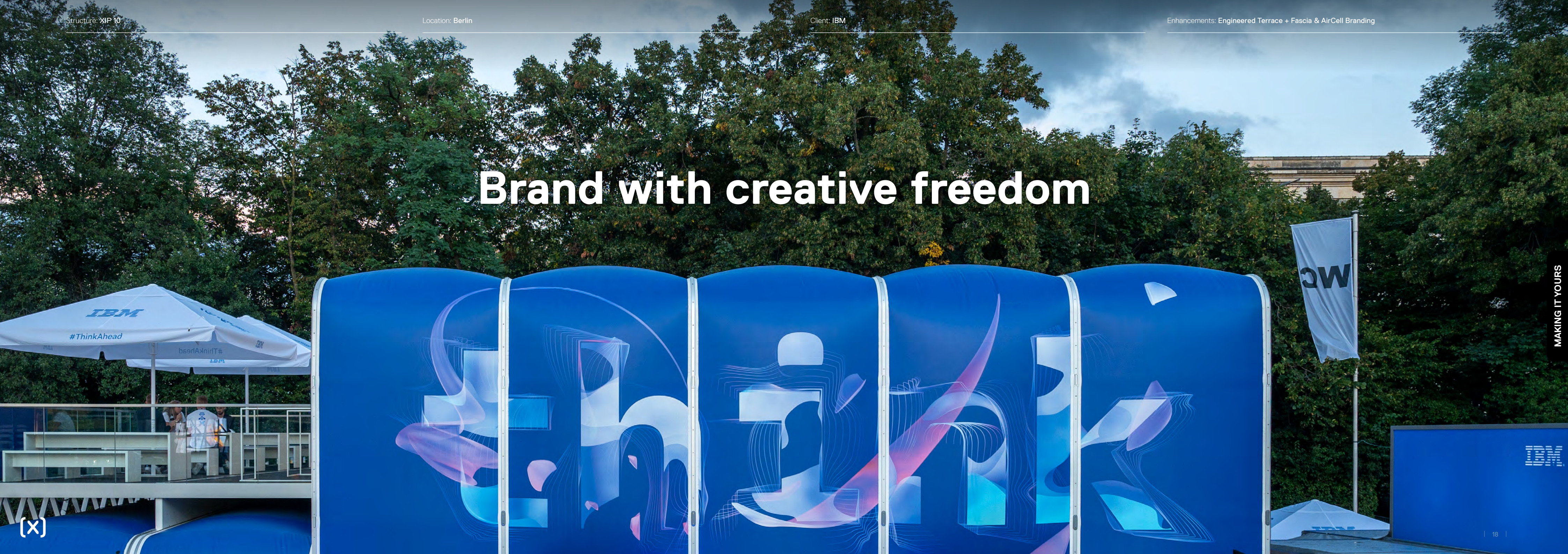
Acting as a black canvas for brands to express themselves, AirCells can be used attract passers by and engage your core audience.

From fully-printed artwork to temporary branding, the AirCells allows you to animate the structure and bring your unique vision to life.

MAKING IT YOURS



# Brand with creative freedom







Blow  
& behold



Structure: XPO 6  
Location: La Defense, Paris  
Client: Audi

Enhancements:  
Seamless rear fascia  
branding



## GRAPHIC ENHANCEMENTS

# Fascias

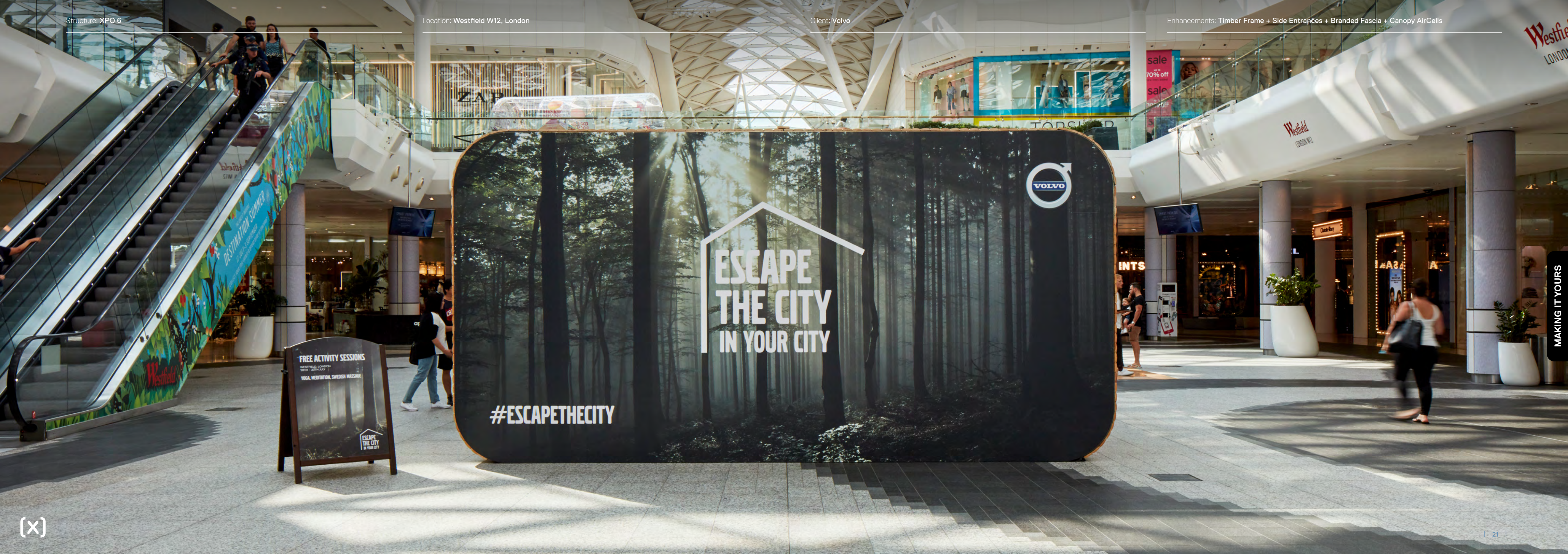
### Changing your appearance.

Front and rear fascias provide ample space for brands to effectively tell their story.

Stretching from floor ceiling, this expansive canvas gives brands the means to intrigue, attract and communicate with their audience.

What better way to speak to the world than with full colour graphics, unique to their own message.





FREE ACTIVITY SESSIONS

WESTFIELD, LONDON  
28TH - 30TH JULY

YOGA, MEDITATION, SWEDISH MASSAGE

ESCAPE  
THE CITY  
IN YOUR CITY

#ESCAPETHECITY

ESCAPE  
THE CITY  
IN YOUR CITY



MAKING IT YOURS



STRUCTURAL ENHANCEMENTS

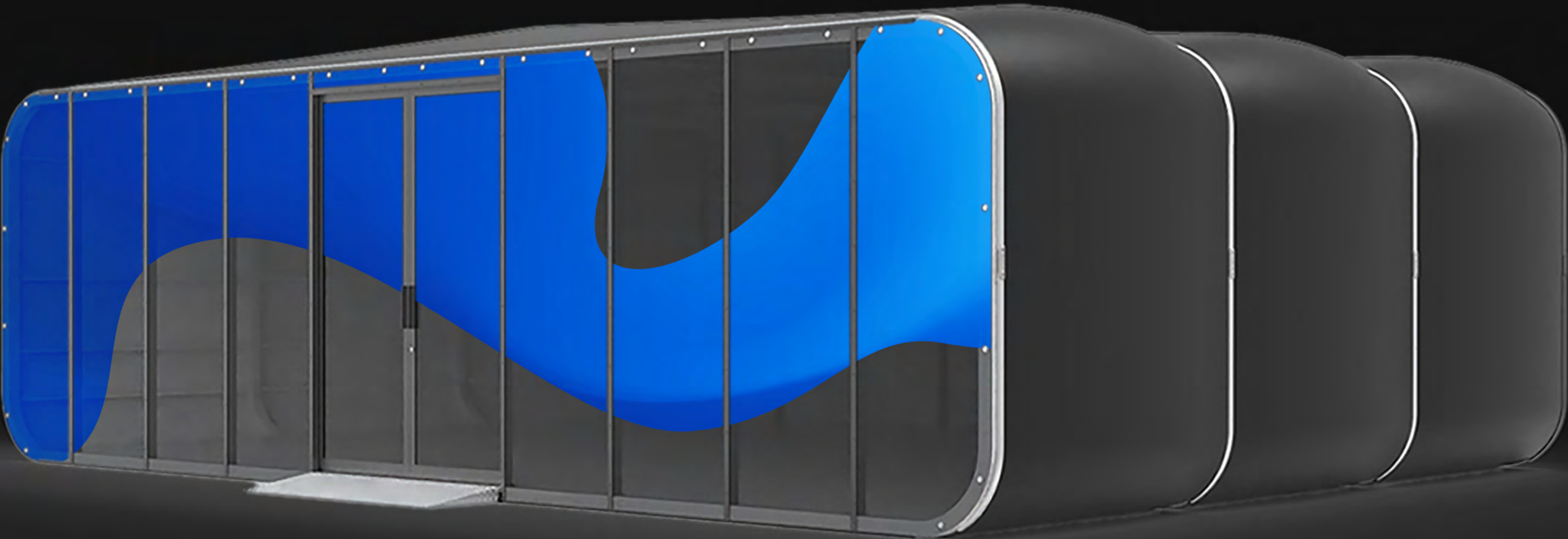
# Fascia Options

**The face lift.**

We know that one size doesn't fit all, so we made the XPO range for brands to dramatically change its appearance.

Our different fascia options give the flexibility to enhance the experience depending on the intended use of the interior.

Whether it's a fully open fascia to create an airy indoor space, or a fully closed fascia with sliding doors for extra privacy, the XPO range has the flexibility to suit your event perfectly.

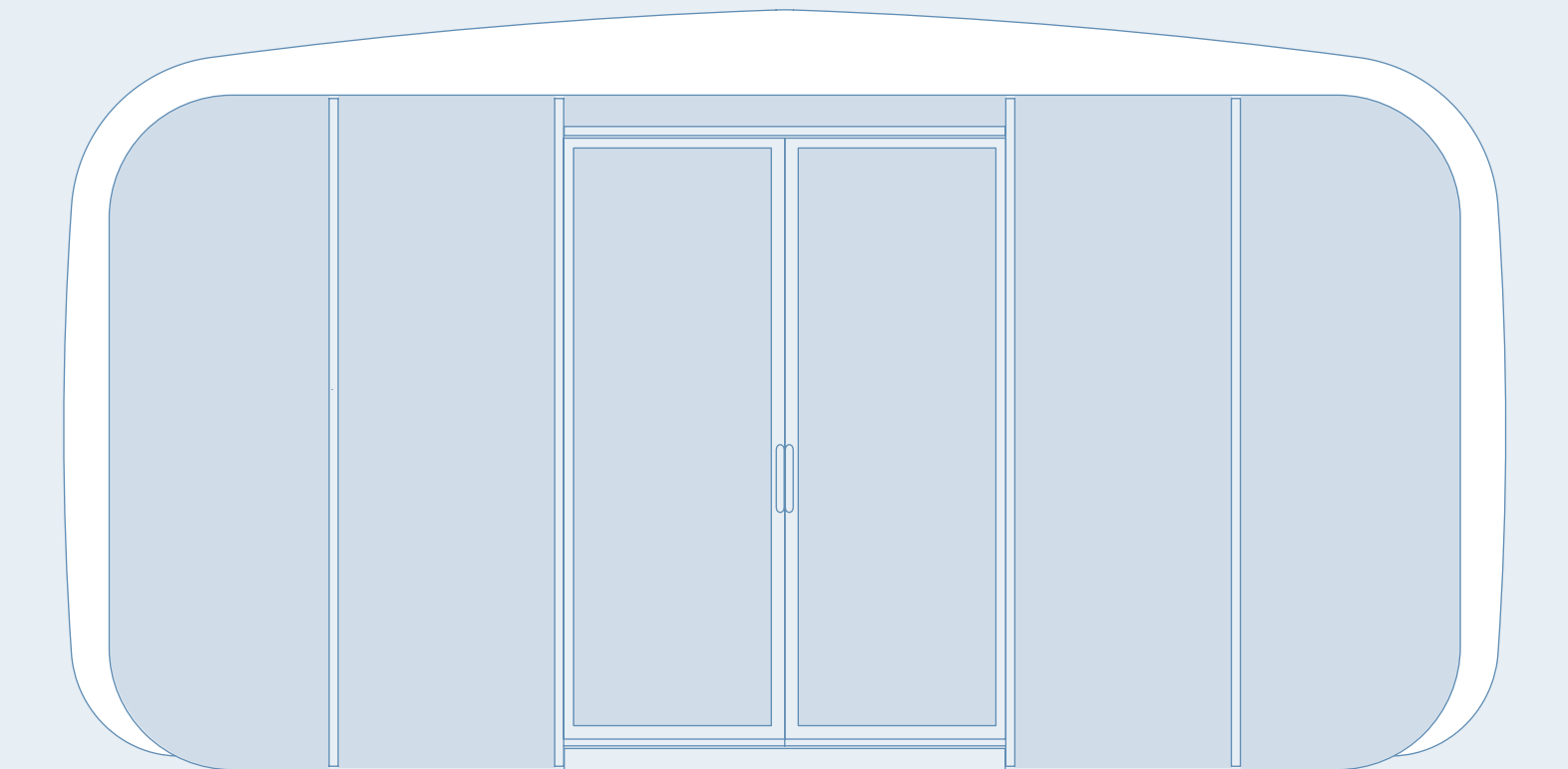


MAKING IT YOURS

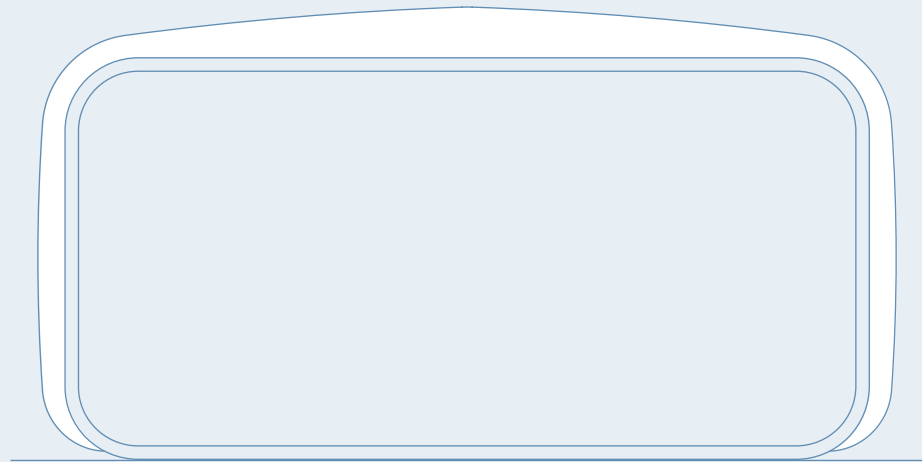


# XPO 6

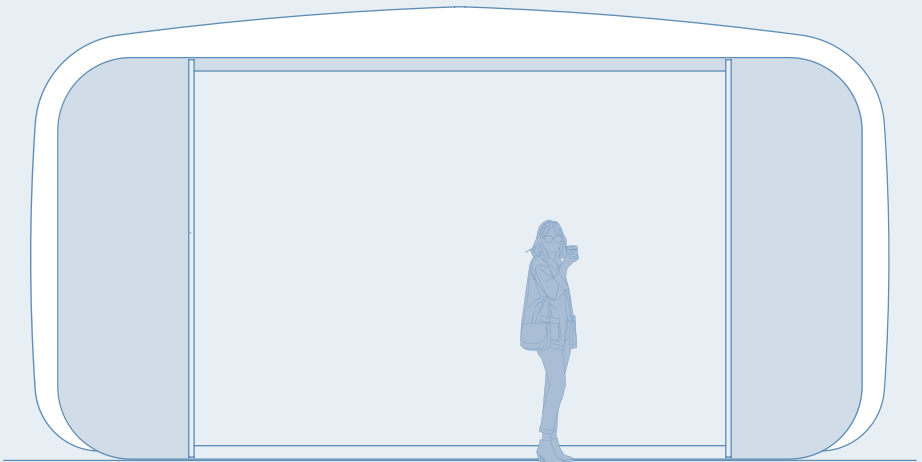
Fascia  
Options



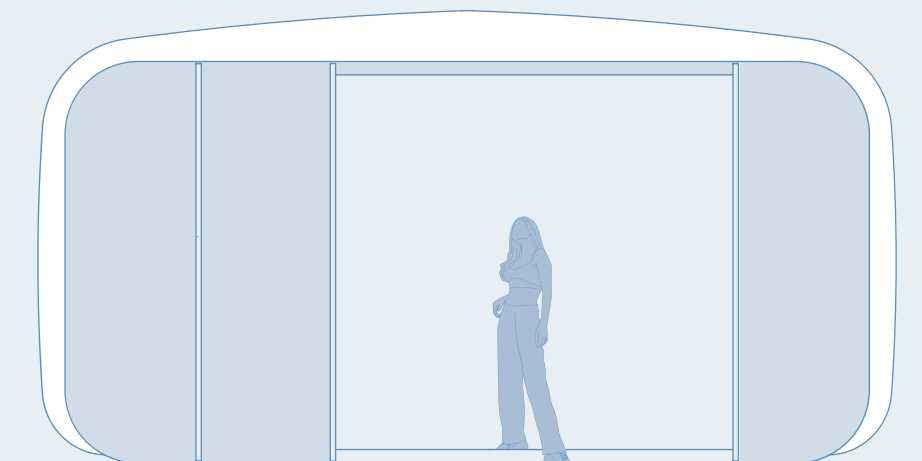
STANDARD



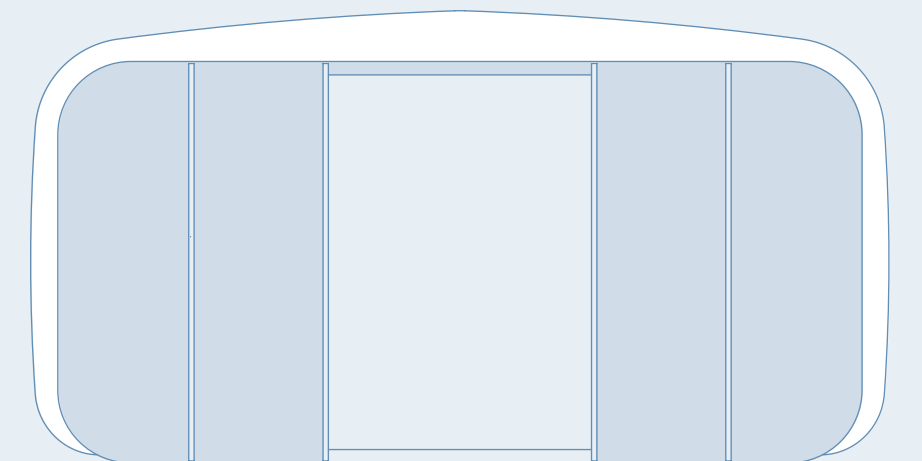
FULL OPEN



4M OPEN



3M OPEN



2M OPEN



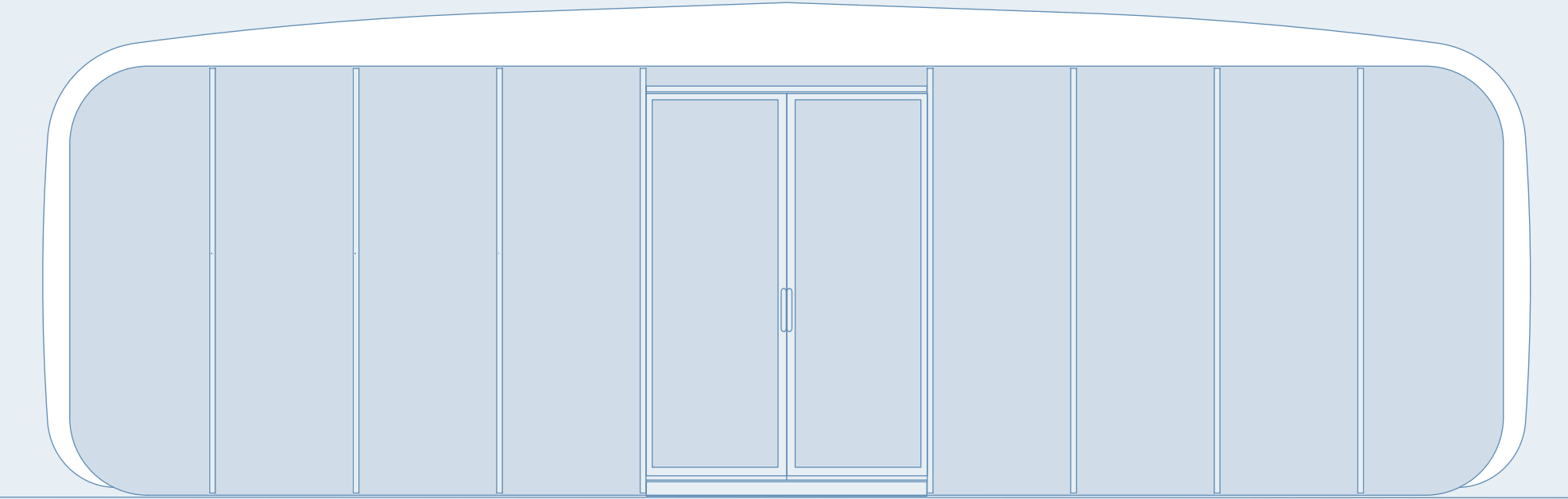


MAKING IT YOURS

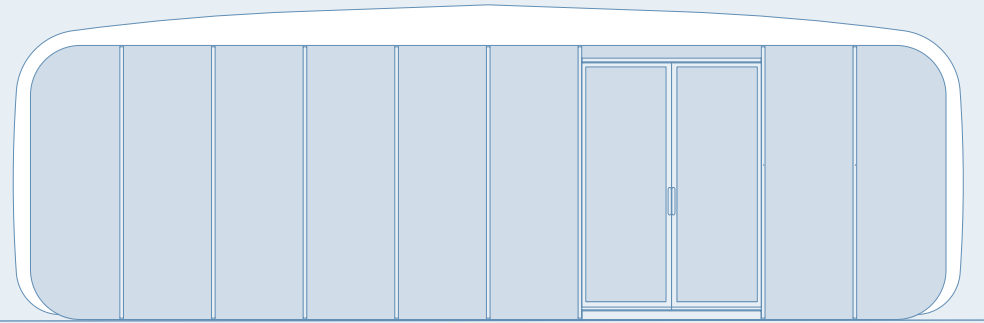


# XPO 10

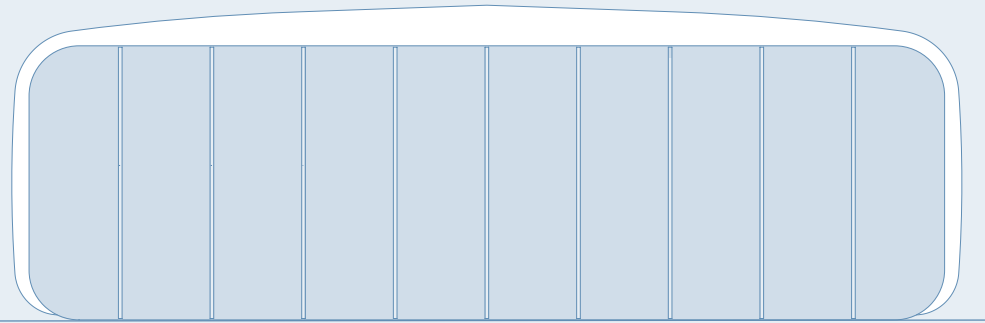
Fascia  
Options



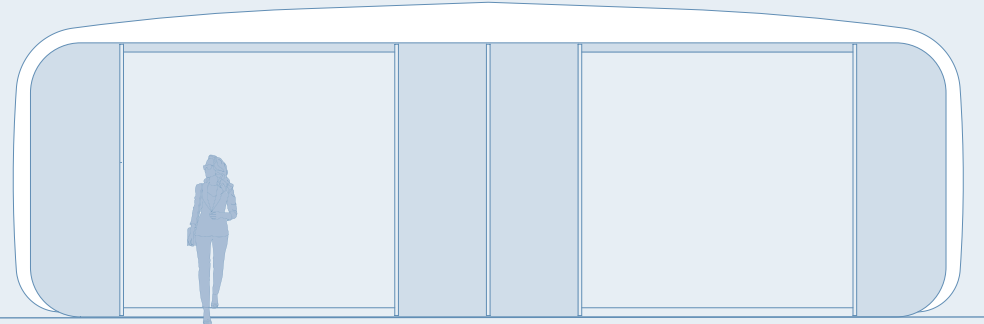
STANDARD



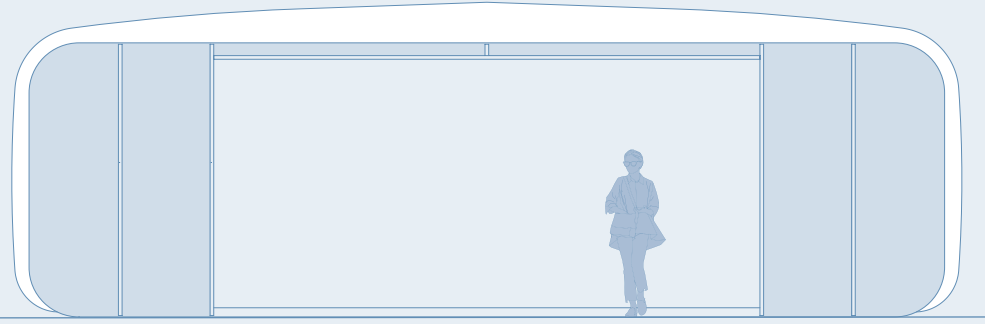
DOOR RIGHT (OR LEFT)



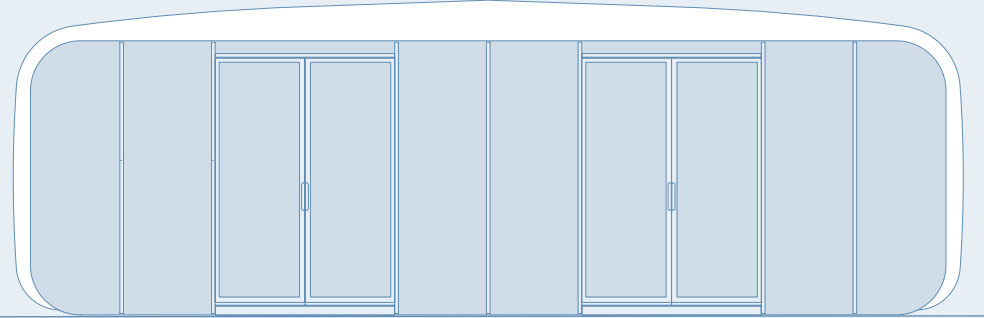
FULL CLOSED



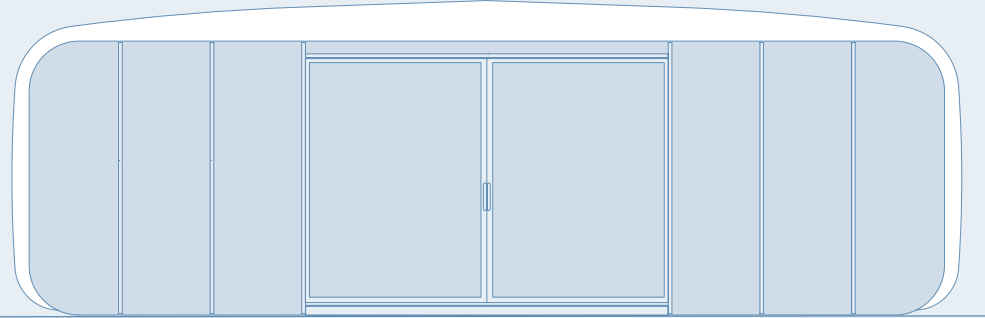
DOUBLE 3M OPEN



6M OPEN

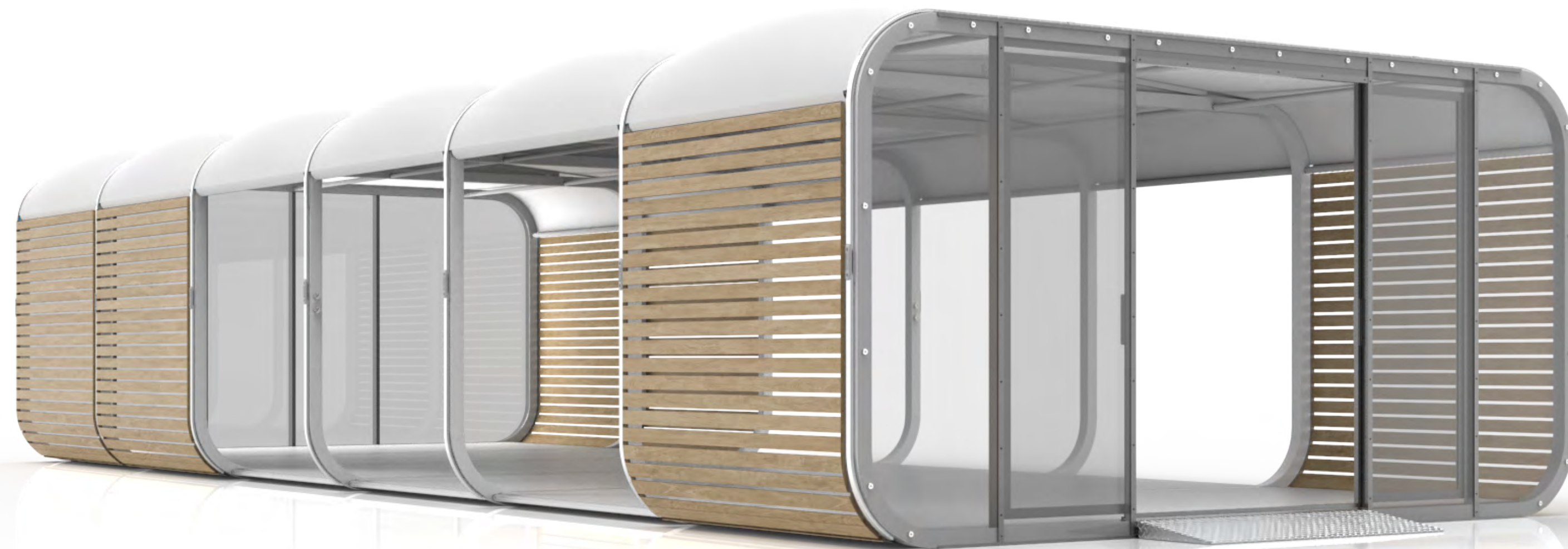


DOUBLE DOOR SPLIT



DOUBLE DOOR





#### STRUCTURAL ENHANCEMENTS

## The Side Effects

**Express your personality with seamless all-round enhancements.**

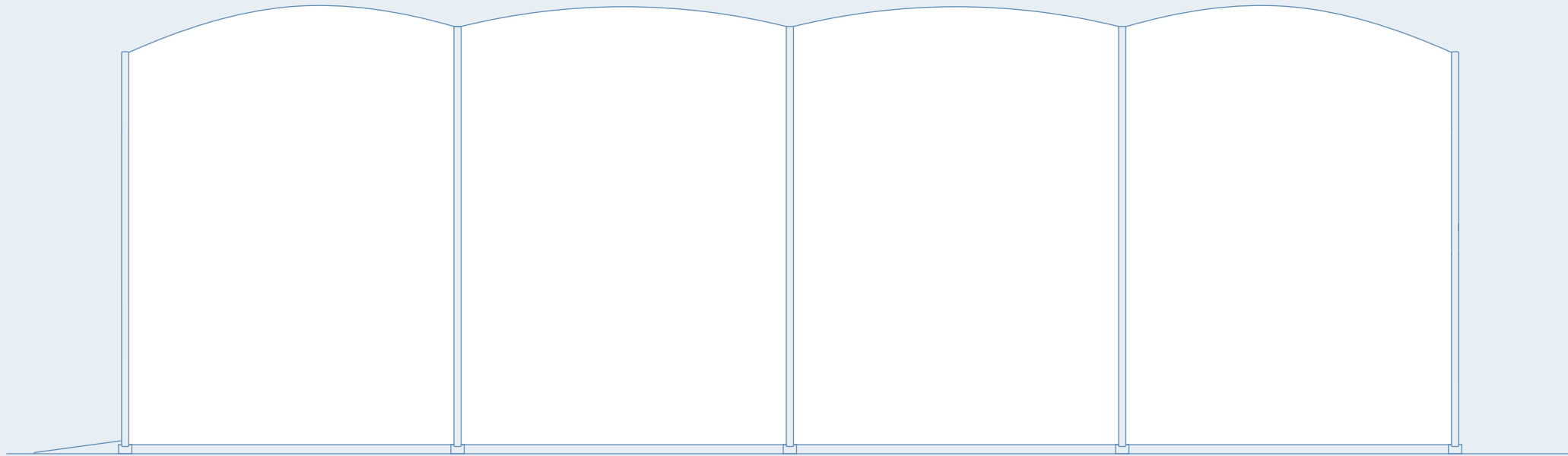
The sides of the XPO range provide as much flexibility as the fascias for brands to create something unique to them.

Whether you choose from our standard AirCell options, slatted wooden sides, integrated doors and windows or even no sides at all, our side effects are guaranteed to get you noticed.

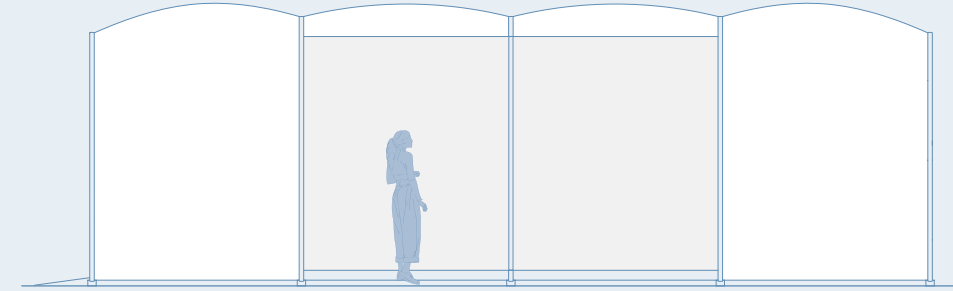


# XPO 6 + 10

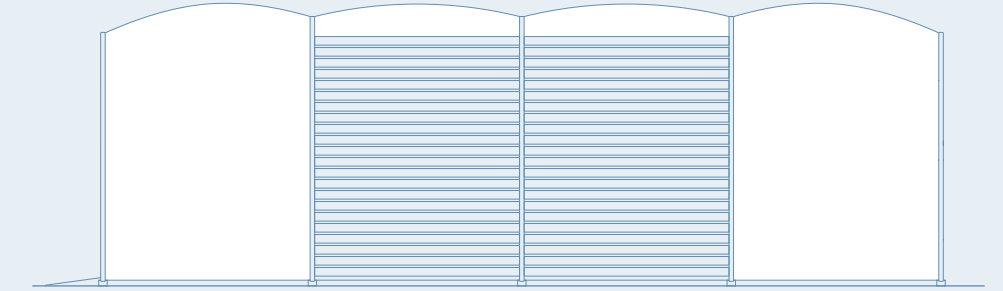
## Side Options



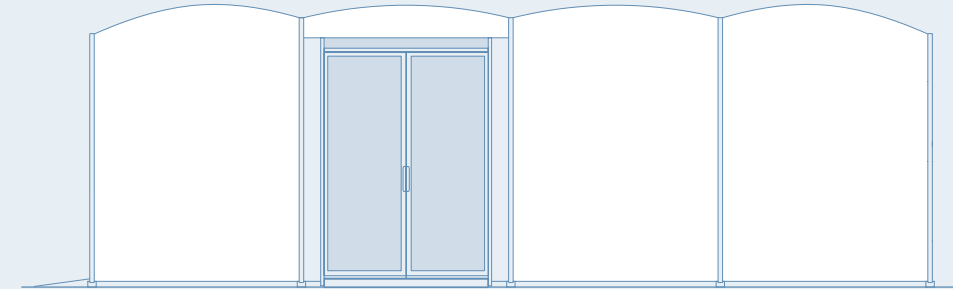
STANDARD



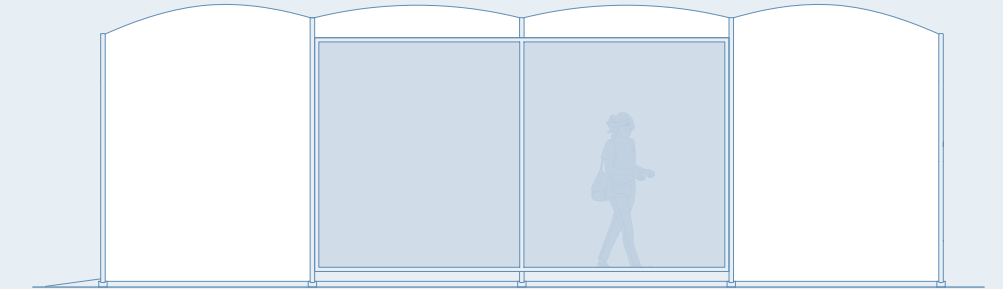
OPEN



SLATTED



DOOR



WINDOW







# Engineered harmony







Structure: XPO 6

Location: Austria

Client: HOKA

Enhancement: Open Branded Fascia & AirCell Branding + 3/4 AirCells

MAKING IT YOURS





Structure: XPO 10 Double Height

Location: Melbourne, Australia

Client: KIA

Enhancements: AirCell Branding + 3/4 AirCells + Recessed Fascia



Dressed up  
& ready to go

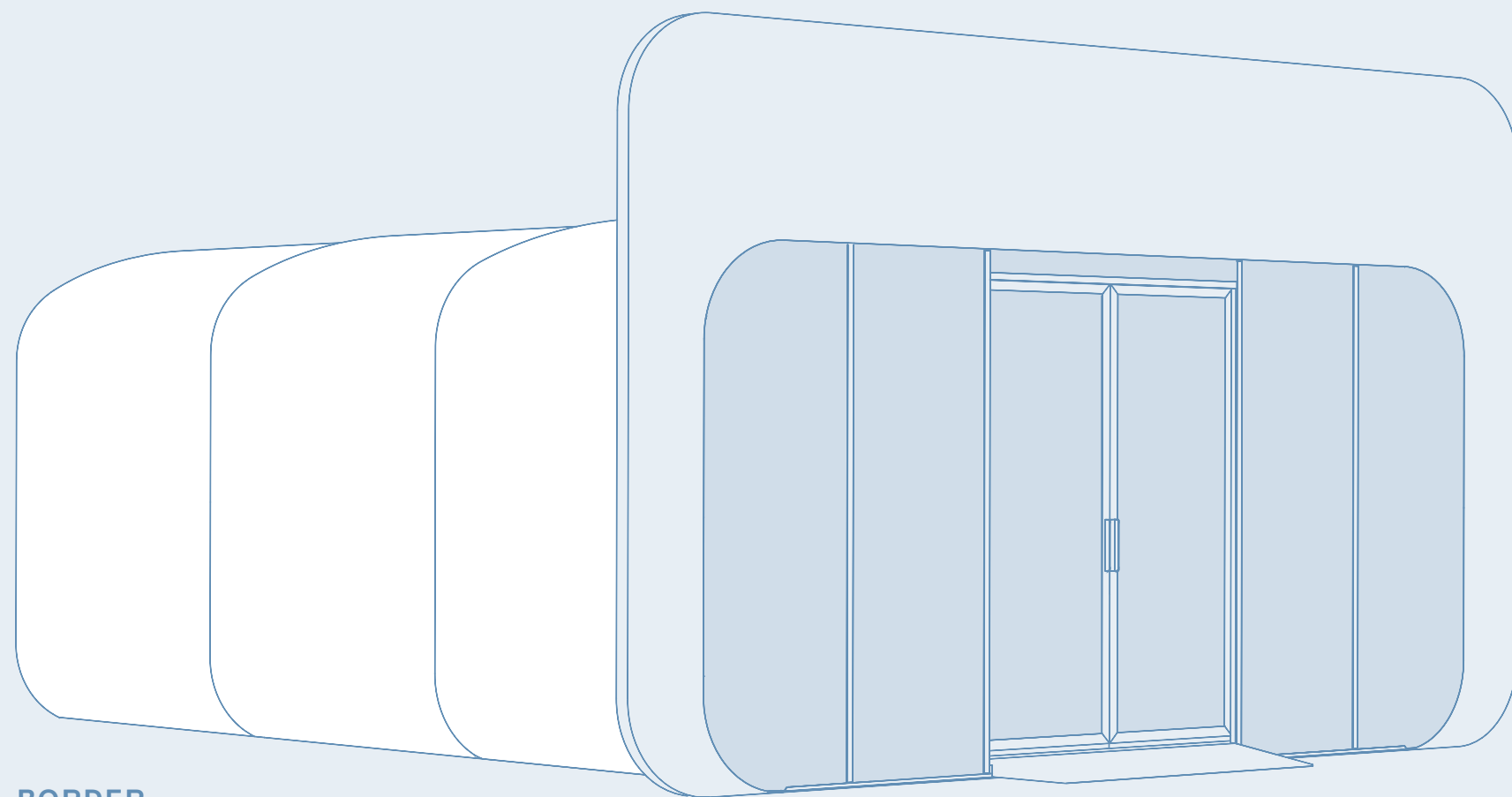
MAKING IT YOURS

(x)

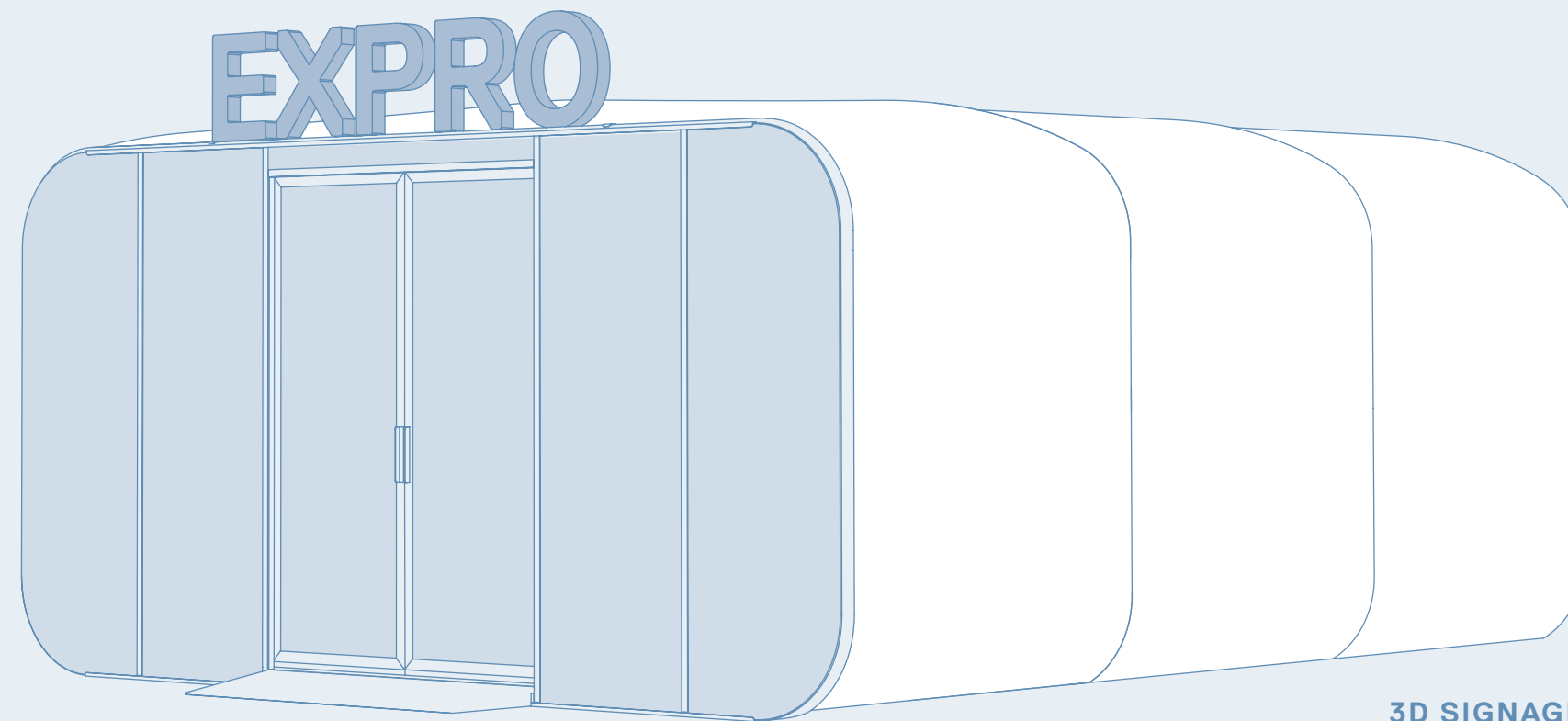


# XPO 6 + 10

## Additional Enhancements



BORDER



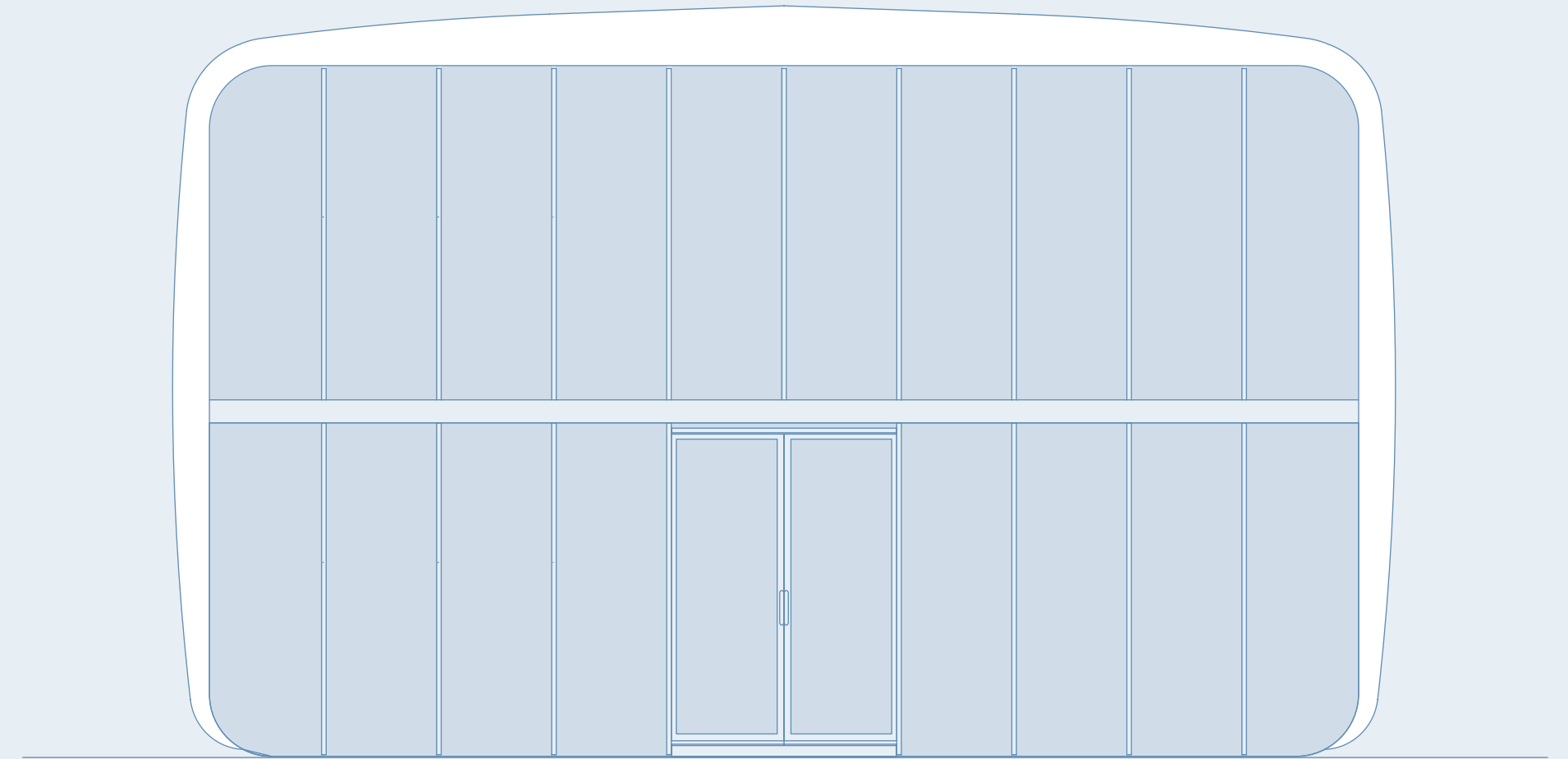
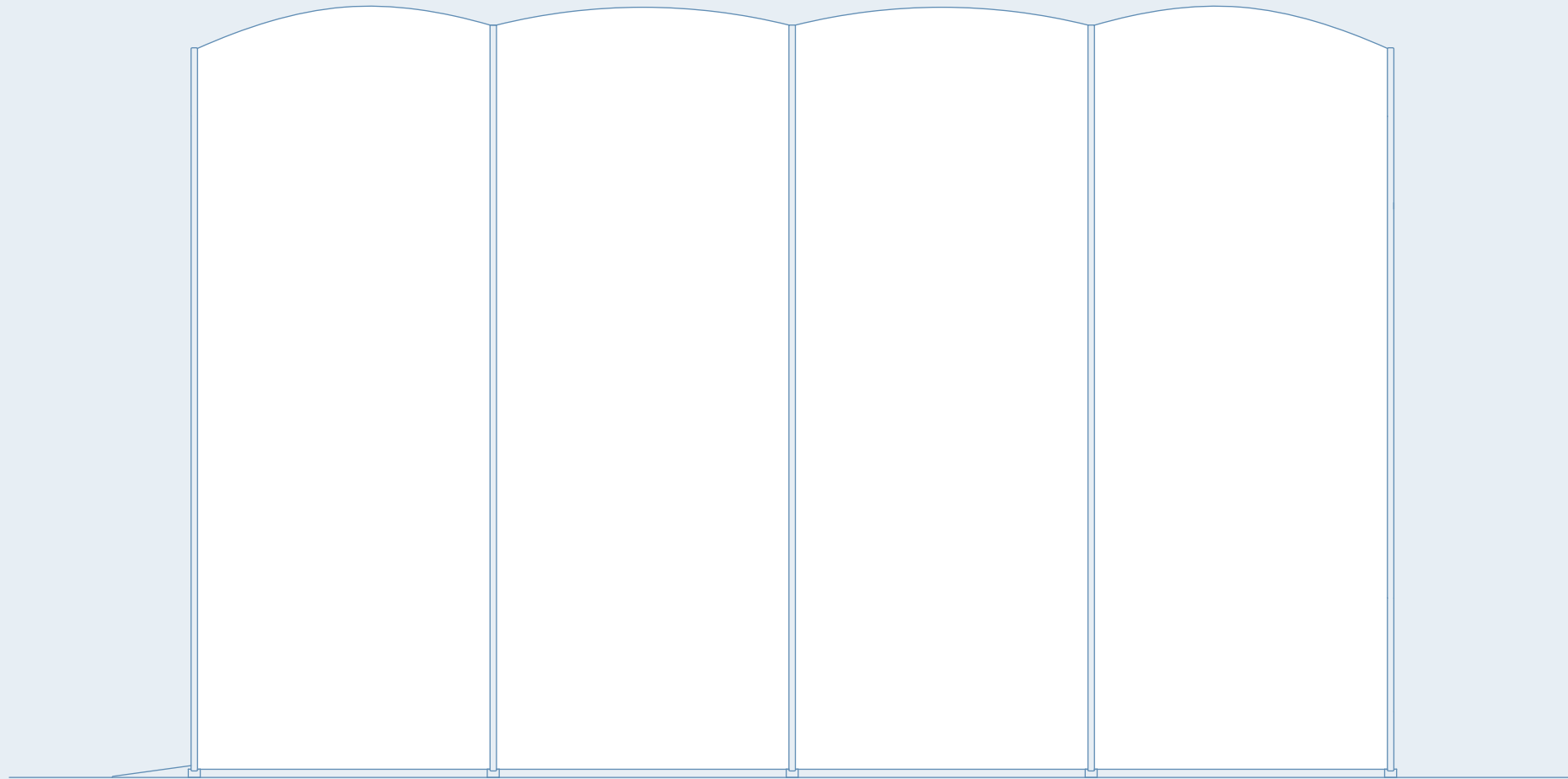
3D SIGNAGE







# Double up with the XPO 10DH









## INTERIOR ENHANCEMENTS

# XPLAY

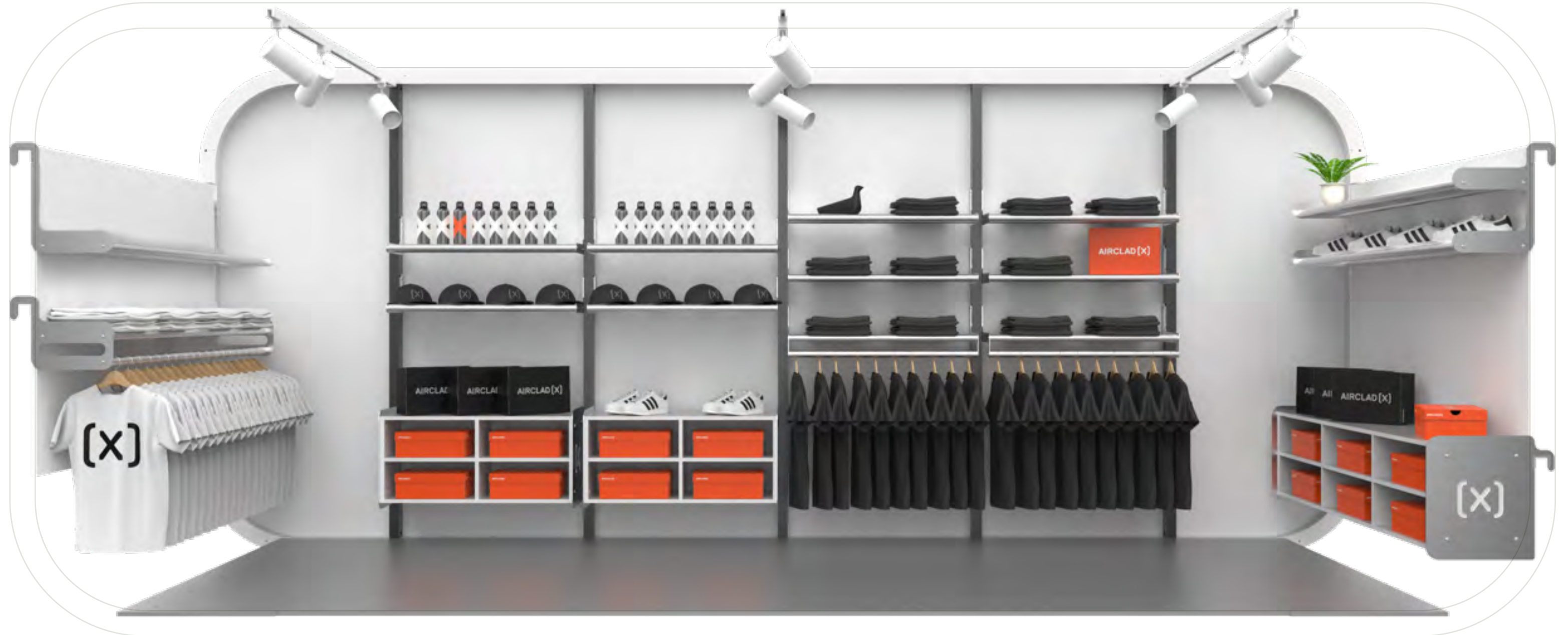
**The future of event retail comes nicely packaged with the addition of XPLAY for EXPRO.**

Our reusable, plug & play internal shoplift systems enables you to merchandise your brand.

Designed to efficiently use space for maximum return, specifically designed and engineered to seamlessly work with the XTRAIL. (Please note this offer differs in size from the Main XPLAY range for the EXPRO range from AirClad X.)

AirClad believes the future in events will be reflected in what we call #EventRetail.

We have been developing innovative products and systems for decades. Our shop-fitting systems for walls, central space frames and mid-floor areas provide a solution for every need and can be continually reconfigured with a wide range of merchandise supports.









Structure: XPO 6

Location: Austria

Client: HOKA

Enhancements: 4m Open Branded Fascia & AirCell Branding + 3/4 AirCells



INTERIOR

(x)



Structure: XPO 6

Location: London

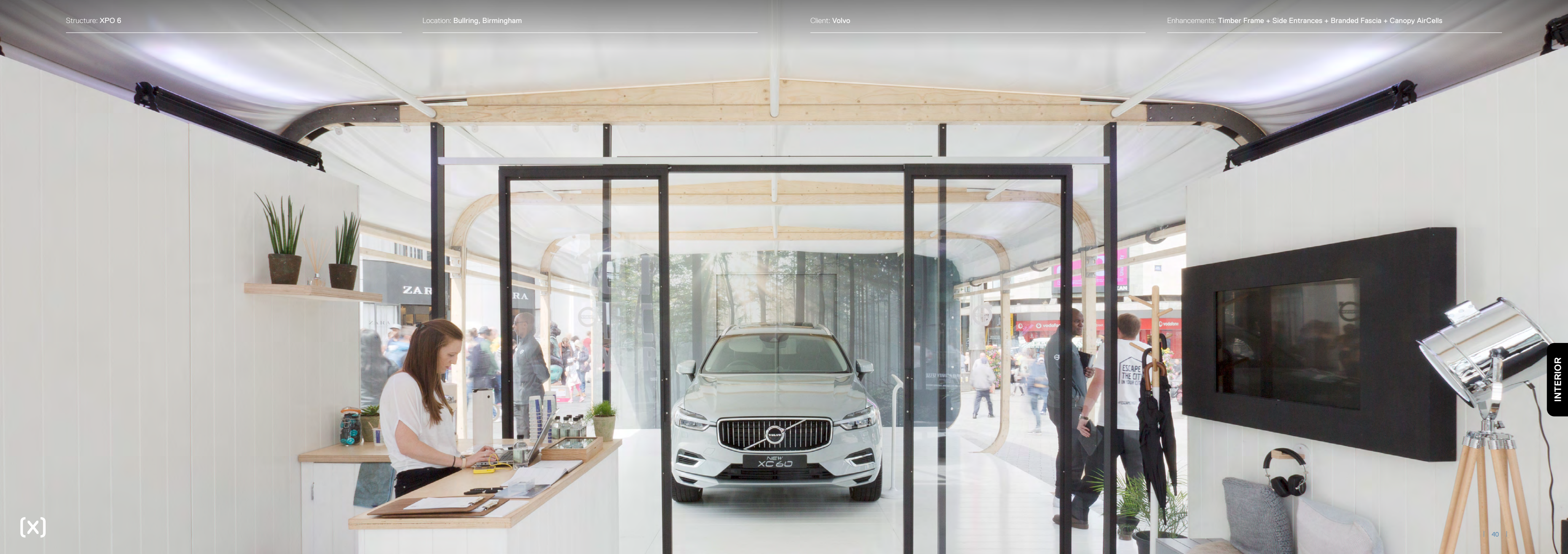
Client: Volvo

Enhancements: Timber Frame + Side Entrances + Branded Fascia + Canopy AirCells

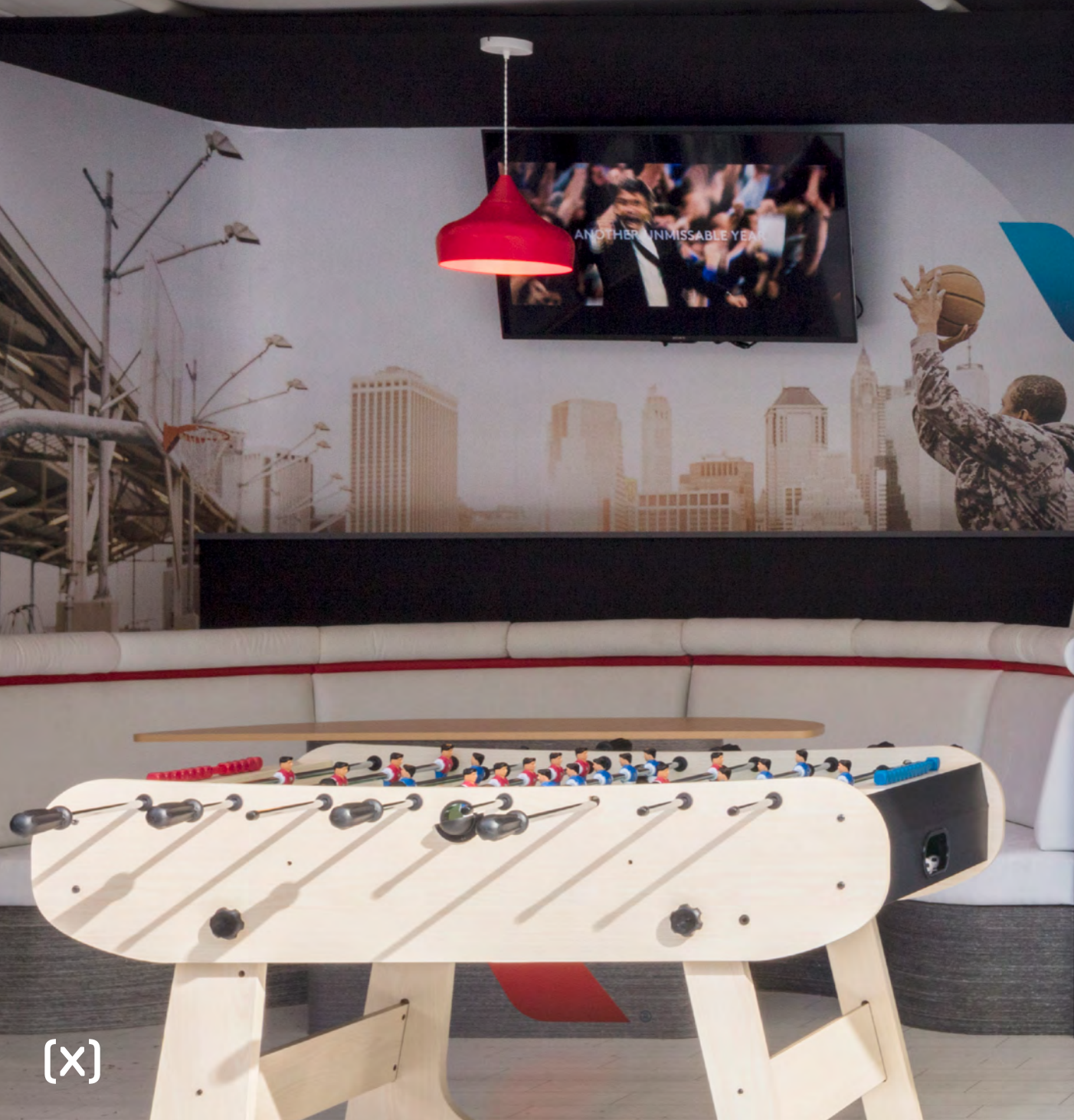


INTERIOR











**BUY**

**RENT**

**LEASE**



# Guide Price Ranges

Purchasing or Rental Options


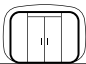
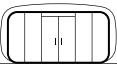
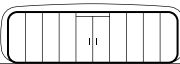
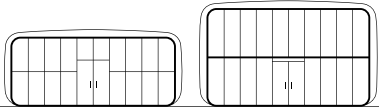
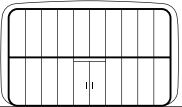
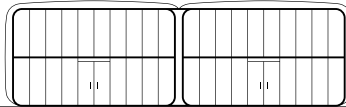
All structures are available for rental, long lease, shared ownership or purchase. Speak to an AirClad representative to discuss your options.

Key - What Could be Included

- ✓ Structure Rental Only  
(With black or white AirCells)
- Branding  
(AirCells & fascias, internal and external)
- Light Customisation of System  
(Eg. Signage & access options)
- Multiple Units or Heavy Customisation  
(Eg. Structural enhancements\*)

This guide shows what standard structures and services are available within each budget range. All prices are for reference only and are not quotations. All prices exclude delivery and installation and would be subject to location and lead time. The longer the lead time, the more cost effective all services become. AirClad reserves the right to amend design specification and prices at any time.  
\* AirClad Design Service required.



	6m	4m	6m	10m		20m	
							
Guide Bands (£)	XTRL	XPO4	XPO6	XPO10	XPO10 Double Height	XIP10	XIP20
A 0 - 3,000	✓	✗	✗	✗	✗	✗	✗
B 3,000 - 12,500	✓ □	✓	✓	✗	✗	✗	✗
C 10,000 - 25,000	✓ □ ○	✓ □	✓ □	✓ □	✗	✗	✗
D 20,000 - 40,000	✓ □ ○ ●	✓ □ ○ ●	✓ □ ○ ●	✓ □	✓	✗	✗
E 35,000 - 60,000	-	-	-	✓ □ ○ ●	✓ □ ○	✓	✗
F 50,000 - 100,000	-	-	-	-	✓ □ ○ ●	✓ □ ○	✓
G 80,000 - 150,000	-	-	-	-	-	✓ □ ○ ●	✓ □
H 125,000 +	-	-	-	-	-	-	✓ □ ○



# Finance Options

In partnership with Bluestar Leasing, AirClad have created a range of flexible finance options. We want to ensure that everyone can create the perfect structure that matches their ambition and vision, not just their budget.

## Why buy when you can lease?

Preserve your working capital and spread the cost.

## Simple application process

Fast credit decisions and eSign documents.

## Finance the total solution

Equipment, installation, training and services.

## Tax advantages

Payments are 100% allowable against taxable profits.

## Alternative form of credit

Your existing credit facilities are not affected.

## Flexible upgrade paths

Upgrade, add equipment or settle throughout the term.

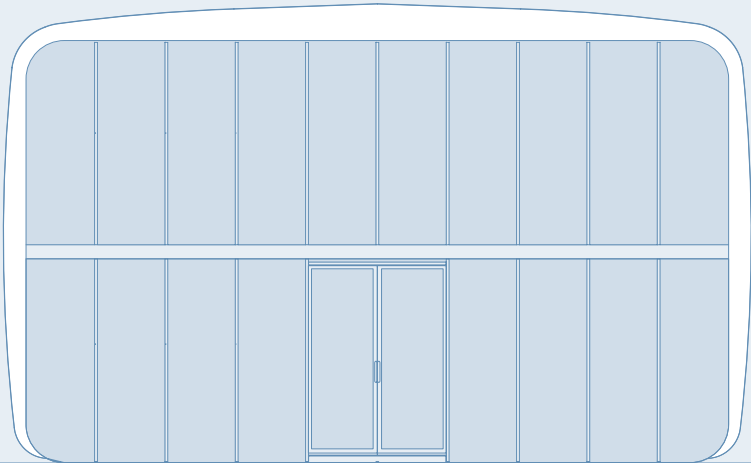
**Get in touch to receive our Finance Calculator and learn more about your options.**



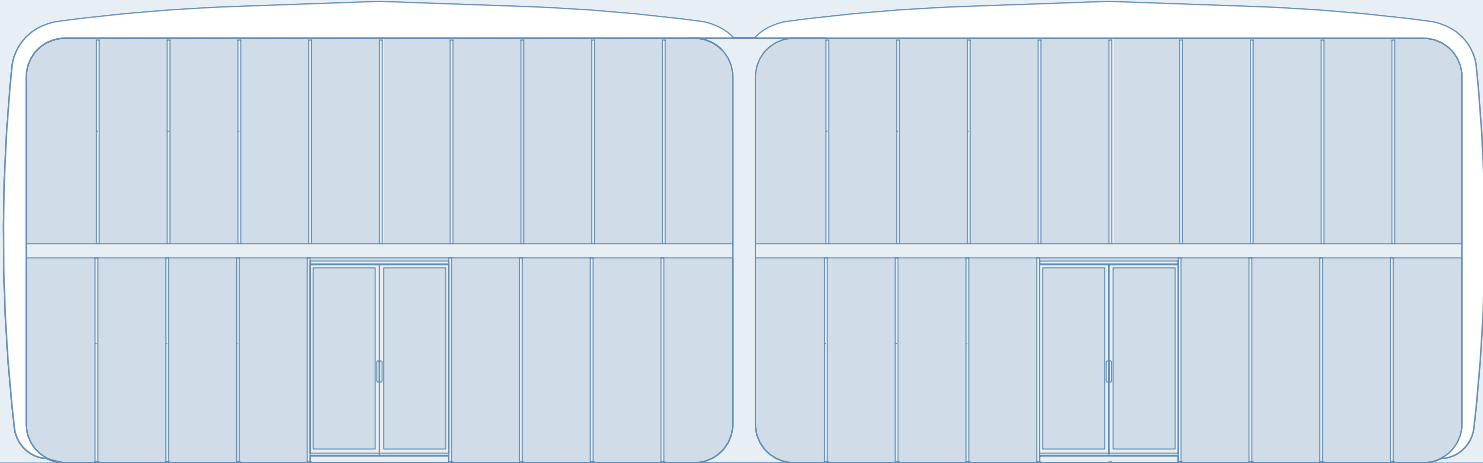
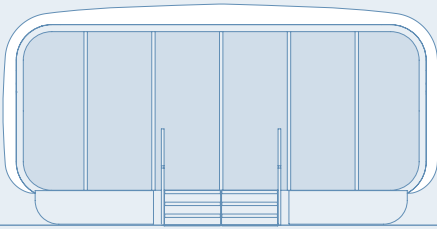


# MEET THE FAMILY

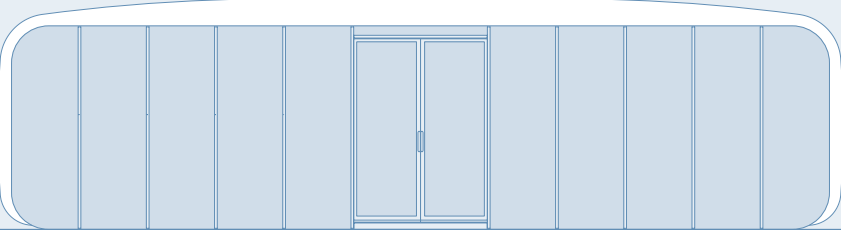
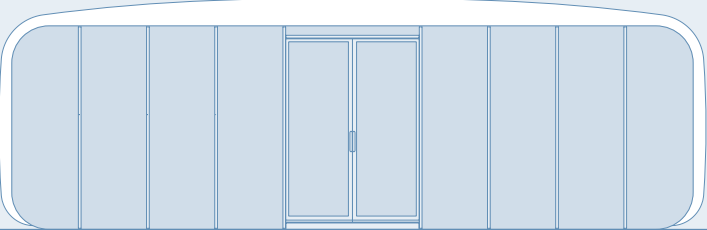
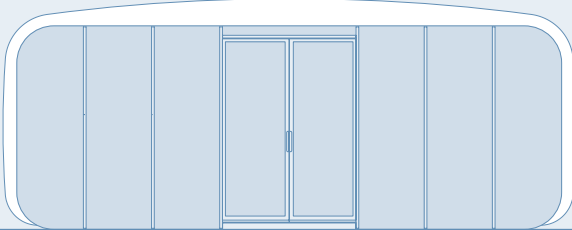
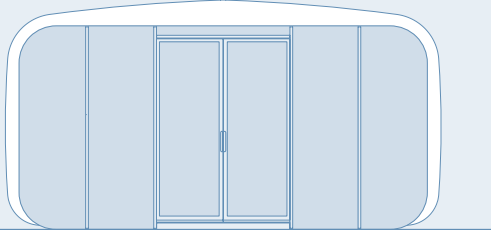
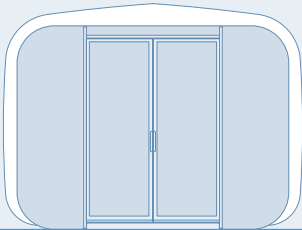
**XIP**  
10 / 20 / 10[M] / 20[M]



**XTRL**  
6



**XPO**  
4 / 6 / 8 / 10 / 12





## OUR MISSION

# Eco Statement

**Our products and systems have been developed with an eco-conscious approach since we started back in 1995.**

Sustainability has become an increasingly large part of daily life and as our clients and partners become more aware of the damage that industry is doing to the local and global environment, we are working hard to demonstrate our commitment to sustainable change and searching for solutions together. We believe our business practises reflect a more eco-minded, future-facing approach that is better for all.

AirClad Products are designed for reuse, time and time again. We're proud to say that some of our oldest structures, those that started us on this journey, are still in everyday use over ten years after leaving the factory, with expectations to last way into the future. The modular nature of AirClad enables us to easily replace and refurbish parts, to achieve new aesthetics and minimise breakages. Extending the life of our structures helps us reduce our environmental footprint, yet still we aim to do more.





AIRCLAD

ANYWHERE



# AIRCLAD (X)

AirClad Ltd  
Essenstraat 5  
2060  
Antwerp  
Belgium

info@airclad.com  
www.airclad.com

AirClad Ltd  
The Echo Building  
18 Albert Road  
Bournemouth  
BH1 1BZ

+44 (0) 1202 942 475



*"As a designer, I strive to encourage opportunities of chance, where creativity moves beyond appearance. For me there is joy in developing unique products that challenge convention, inspire and engage."*

Founder  
Nick Crosbie

**SPACE FOR LIFE**

Design by Inflate  
All IP and design rights Te Koop Ltd